

Product Information

Size:

50ul

Reactivity:

Human

Source:

Rabbit

Isotype:

IgG

Applications:

ELISA, IHC

Recommended dilutions:

ELISA:1:2000-1:10000, IHC:1:20-1:200

Protein Background:

Forms a voltage-independent potassium channel that is activated by intracellular calcium. Activation is followed by membrane hyperpolarization which promotes calcium influx. Required for maximal calcium influx and proliferation during the reactivation of naive T-cells. The channel is blocked by clotrimazole and charybdotoxin but is insensitive to apamin.

Gene ID:

KCNN4

Uniprot

O15554

Synonyms:

Intermediate conductance calcium-activated potassium channel protein 4 (SK4) (SKCa 4) (SKCa4) (IKCa1) (IK1) (KCa3.1) (KCa4) (Putative Gardos channel), KCNN4, IK1 IKCA1 KCA4 SK4

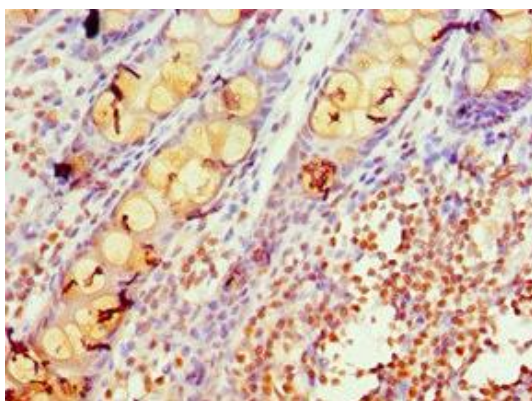
Immunogen:

Recombinant Human Intermediate conductance calcium-activated potassium channel protein 4 protein (288-427AA).

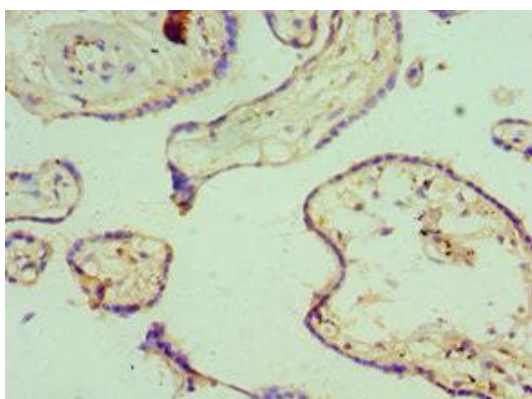
Storage:

PBS with 0.02% sodium azide, 50% glycerol, pH7.3.

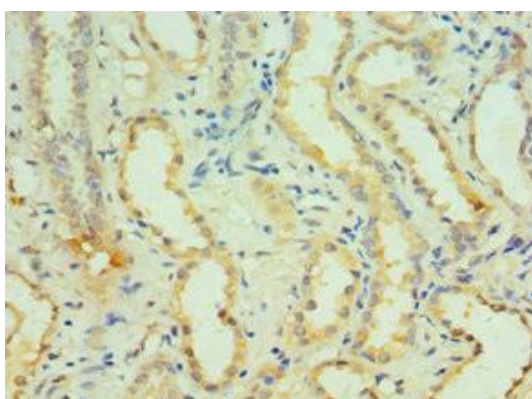
Product Images



Immunohistochemistry of paraffin-embedded human colon tissue using PACO43296 at dilution of 1:100.



Immunohistochemistry of paraffin-embedded human placenta tissue using PACO43296 at dilution of 1:100.



Immunohistochemistry of paraffin-embedded human kidney tissue using PACO43296 at dilution of 1:100.