

MORF4L1 Antibody



PACO43284

Product Information

Size:

50ul

Reactivity:

Human

Source:

Rabbit

Isotype:

IgG

Applications:

ELISA, WB, IHC

Recommended dilutions:

ELISA:1:2000-1:10000, WB:1:200-1:1000,
IHC:1:20-1:200

Protein Background:**Gene ID:**

MORF4L1

Uniprot

Q9UBU8

Synonyms:

Mortality factor 4-like protein 1 (MORF-related gene 15 protein) (Protein MSL3-1)
(Transcription factor-like protein MRG15), MORF4L1, MRG15

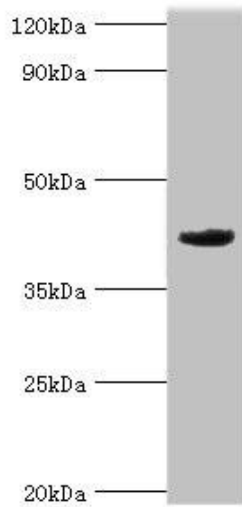
Immunogen:

Recombinant Human Mortality factor 4-like protein 1 protein (1-100AA).

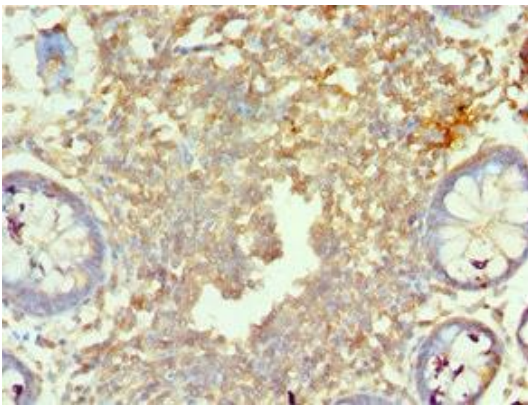
Storage:

PBS with 0.02% sodium azide, 50% glycerol, pH7.3.

Product Images



Western blot. All lanes: Mortality factor 4-like protein 1 antibody at 2 μ g/ml + A549 whole cell lysate. Secondary. Goat polyclonal to rabbit IgG at 1/10000 dilution. Predicted band size: 42, 38, 27 kDa. Observed band size: 42 kDa.



Immunohistochemistry of paraffin-embedded human colon tissue using PACO43284 at dilution of 1:100.