

Product Information

Size:

50ul

Reactivity:

Human

Source:

Rabbit

Isotype:

IgG

Applications:

ELISA, IHC

Recommended dilutions:

ELISA:1:2000-1:10000, IHC:1:20-1:200

Protein Background:

DNA-binding protein involved in cell cycle control. May act as a transcription activator. Component of the PRP19-CDC5L complex that forms an integral part of the spliceosome and is required for activating pre-mRNA splicing. The PRP19-CDC5L complex may also play a role in the response to DNA damage (DDR).

Gene ID:

CDC5L

Uniprot

Q99459

Synonyms:

Cell division cycle 5-like protein (Cdc5-like protein) (Pombe cdc5-related protein), CDC5L, KIAA0432 PCDC5RP

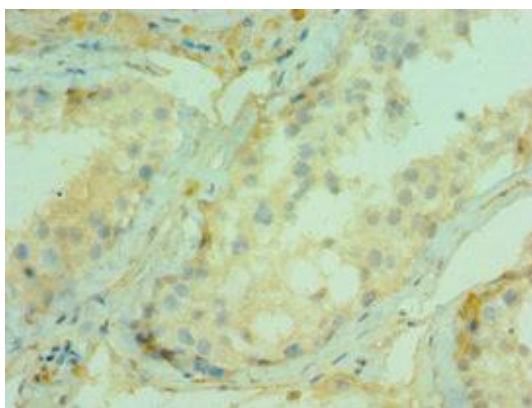
Immunogen:

Recombinant Human Cell division cycle 5-like protein (563-802AA).

Storage:

PBS with 0.02% sodium azide, 50% glycerol, pH7.3.

Product Images



Immunohistochemistry of paraffin-embedded human testis tissue using PACO43272 at dilution of 1:100.