

Product Information

Size:

50ul

Reactivity:

Human

Source:

Rabbit

Isotype:

IgG

Applications:

ELISA, WB, IHC

Recommended dilutions:

ELISA:1:2000-1:10000, WB:1:500-1:2000,
IHC:1:20-1:200

Protein Background:

Associates with components of the Mediator and p160 coactivator complexes that play a role as intermediaries transducing regulatory signals from upstream transcriptional activator proteins to basal transcription machinery at the core promoter. Recruited to endogenous nuclear receptor target genes in response to the appropriate hormone. Also functions as a p53 coactivator. May thus play an important role in transcriptional regulation. May be involved in apoptosis signaling in the presence of the reindol CD437. Apoptosis induction involves sequestration of 14-3-3 protein(s) and mediated altered expression of multiple cell cycle regulatory genes including MYC, CCNB1 and CDKN1A. Plays a role in cell cycle progression and/or cell proliferation.

Gene ID:

CCAR1

Uniprot

Q8IX12

Synonyms:

Cell division cycle and apoptosis regulator protein 1 (Cell cycle and apoptosis regulatory protein 1) (CARP-1) (Death inducer with SAP domain), CCAR1, CARP1 DIS

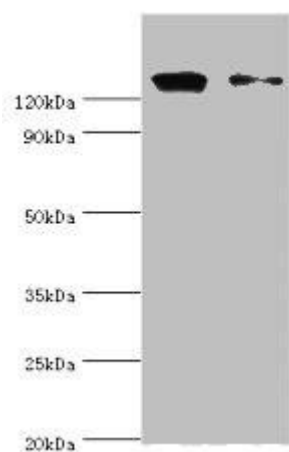
Immunogen:

Recombinant Human Cell division cycle and apoptosis regulator protein 1 protein (1-200AA).

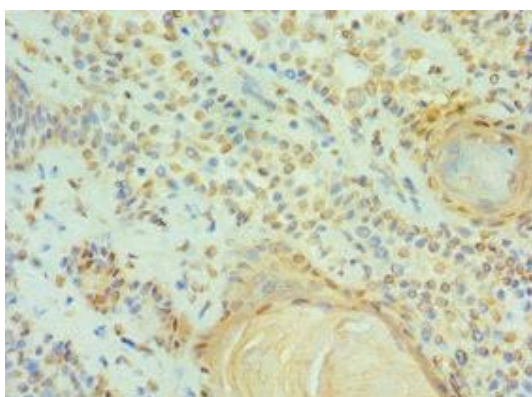
Storage:

PBS with 0.02% sodium azide, 50% glycerol, pH7.3.

Product Images



Western blot. All lanes: CCAR1 antibody at 10 μ g/ml. Lane 1: HeLa whole cell lysate. Lane 2: PC-3 whole cell lysate. Secondary: Goat polyclonal to rabbit IgG at 1/10000 dilution. Predicted band size: 133, 132 kDa. Observed band size: 133 kDa.



Immunohistochemistry of paraffin-embedded human breast cancer using PACO43270 at dilution of 1:100.