

Product Information

Size:

50ul

Reactivity:

Human, Mouse

Source:

Rabbit

Isotype:

IgG

Applications:

ELISA, WB, IHC, IF

Recommended dilutions:

ELISA:1:2000-1:10000, WB:1:500-1:2000,
IHC:1:20-1:200, IF:1:50-1:200

Protein Background:

Ubiquitin-like protein which plays an important role in cell cycle control and embryogenesis. Covalent attachment to its substrates requires prior activation by the E1 complex UBE1C-APPBP1 and linkage to the E2 enzyme UBE2M. Attachment of NEDD8 to cullins activates their associated E3 ubiquitin ligase activity, and thus promotes polyubiquitination and proteasomal degradation of cyclins and other regulatory proteins.

Gene ID:

NEDD8

Uniprot

Q15843

Synonyms:

NEDD8 (Neddylin) (Neural precursor cell expressed developmentally down-regulated protein 8) (NEDD-8) (Ubiquitin-like protein Nedd8), NEDD8

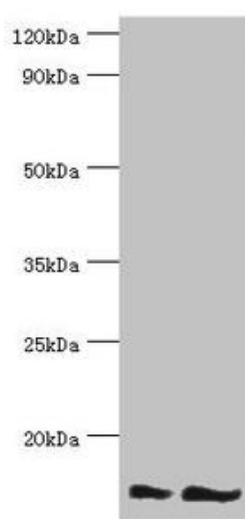
Immunogen:

Recombinant Human NEDD8 protein (1-81AA).

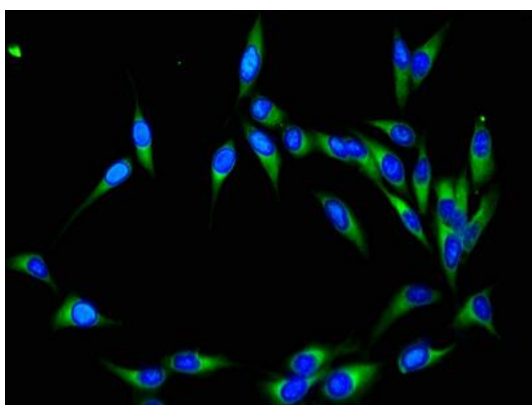
Storage:

PBS with 0.02% sodium azide, 50% glycerol, pH7.3.

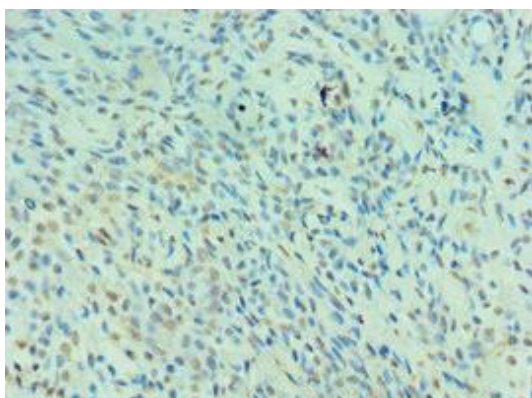
Product Images



Western blot. All lanes: NEDD8 antibody at 16 μ g/ml. Lane 1: Mouse heart tissue. Lane 2: Mouse spleen tissue. Secondary: Goat polyclonal to rabbit IgG at 1/10000 dilution. Predicted band size: 9 kDa. Observed band size: 9 kDa.



Immunofluorescent analysis of HeLa cells using PACO43252 at dilution of 1:100 and Alexa Fluor 488-conjugated AffiniPure Goat Anti-Rabbit IgG(H+L).



Immunohistochemistry of paraffin-embedded human breast cancer using PACO43252 at dilution of 1:100.