

## Product Information

**Size:**

50ul

**Reactivity:**

Human

**Source:**

Rabbit

**Isotype:**

IgG

**Applications:**

ELISA, IHC

**Recommended dilutions:**

ELISA:1:2000-1:10000, IHC:1:20-1:200

**Protein Background:**

Seems to specifically activate progelatinase A. May thus trigger invasion by tumor cells by activating progelatinase A on the tumor cell surface. May be involved in actin cytoskeleton reorganization by cleaving PTK7. Acts as a positive regulator of cell growth and migration via activation of MMP15. Involved in the formation of the fibrovascular tissues in association with pro-MMP2.

**Gene ID:**

MMP14

**Uniprot**

P50281

**Synonyms:**

Matrix metalloproteinase-14 (MMP-14) (EC 3.4.24.80) (MMP-X1) (Membrane-type matrix metalloproteinase 1) (MT-MMP 1) (MTMMP1) (Membrane-type-1 matrix metalloproteinase) (MT1-MMP) (MT1MMP), MMP14

**Immunogen:**

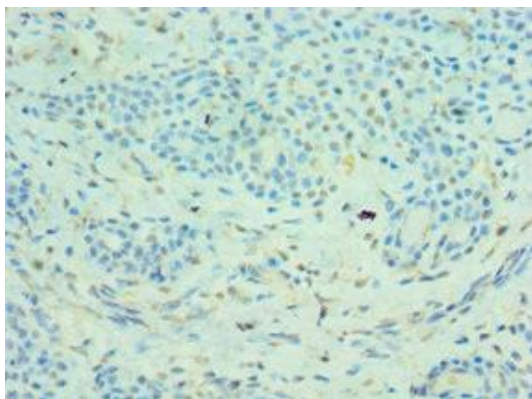
Recombinant Human Matrix metalloproteinase-14 protein (260-540AA).

**Storage:**

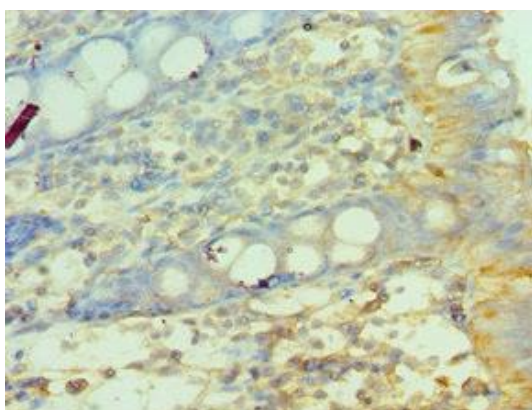
PBS with 0.02% sodium azide, 50% glycerol, pH7.3.

## Product Images

---



Immunohistochemistry of paraffin-embedded human breast cancer using PACO43251 at dilution of 1:100.



Immunohistochemistry of paraffin-embedded human colon tissue using PACO43251 at dilution of 1:100.