

PACO43245

Product Information

Size:

50ul

Reactivity:

Human, Mouse

Source:

Rabbit

Isotype:

IgG

Applications:

ELISA, WB, IHC

Recommended dilutions:

ELISA:1:2000-1:10000, WB:1:500-1:2000,
IHC:1:20-1:200

Protein Background:

Adapter protein (clathrin-associated sorting protein (CLASP)) required for efficient endocytosis of the LDL receptor (LDLR) in polarized cells such as hepatocytes and lymphocytes, but not in non-polarized cells (fibroblasts). May be required for LDL binding and internalization but not for receptor clustering in coated pits. May facilitate the endocytosis of LDLR and LDLR-LDL complexes from coated pits by stabilizing the interaction between the receptor and the structural components of the pits. May also be involved in the internalization of other LDLR family members. Binds to phosphoinositides, which regulate clathrin bud assembly at the cell surface.

Gene ID:

LDLRAP1

Uniprot

Q5SW96

Synonyms:

Low density lipoprotein receptor adapter protein 1 (Autosomal recessive hypercholesterolemia protein), LDLRAP1, ARH

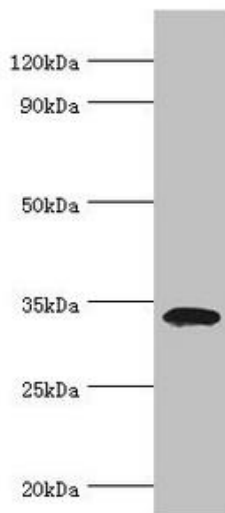
Immunogen:

Recombinant Human Low density lipoprotein receptor adapter protein 1 protein (59-308AA).

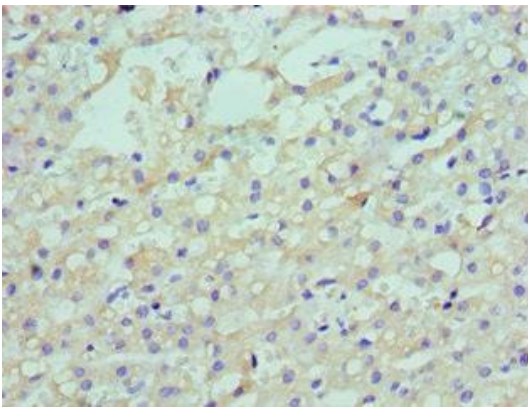
Storage:

PBS with 0.02% sodium azide, 50% glycerol, pH7.3.

Product Images



Western blot. All lanes: Low density lipoprotein receptor adapter protein 1 antibody at 4 μ g/ml + Mouse liver tissue. Secondary. Goat polyclonal to rabbit IgG at 1/10000 dilution. Predicted band size: 34 kDa. Observed band size: 34 kDa.



Immunohistochemistry of paraffin-embedded human liver cancer using PACO43245 at dilution of 1:100.