

PACO43241

---

## Product Information

**Size:**

50ul

**Reactivity:**

Human

**Source:**

Rabbit

**Isotype:**

IgG

**Applications:**

ELISA, IHC

**Recommended dilutions:**

ELISA:1:2000-1:10000, IHC:1:20-1:200

**Protein Background:**

Stacking factor involved in the postmitotic assembly of Golgi stacks from mitotic Golgi fragments. Key structural protein required for the maintenance of the Golgi apparatus integrity: its caspase-mediated cleavage is required for fragmentation of the Golgi during apoptosis. Also mediates, via its interaction with GM130, the docking of transport vesicles with the Golgi membranes.

**Gene ID:**

GORASP1

**Uniprot**

Q9BQQ3

**Synonyms:**

Golgi reassembly-stacking protein 1 (Golgi peripheral membrane protein p65) (Golgi phosphoprotein 5) (GOLPH5) (Golgi reassembly-stacking protein of 65 kDa) (GRASP65), GORASP1, GOLPH5 GRASP65

**Immunogen:**

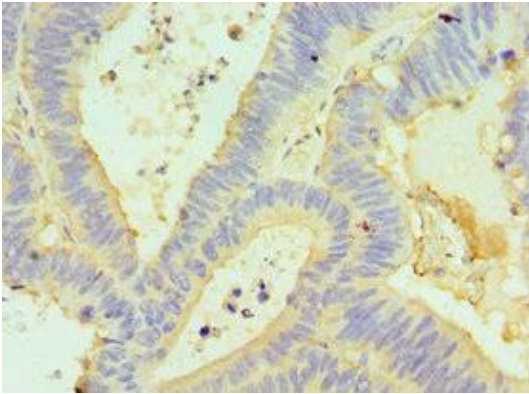
Recombinant Human Golgi reassembly-stacking protein 1 protein (221-440AA).

**Storage:**

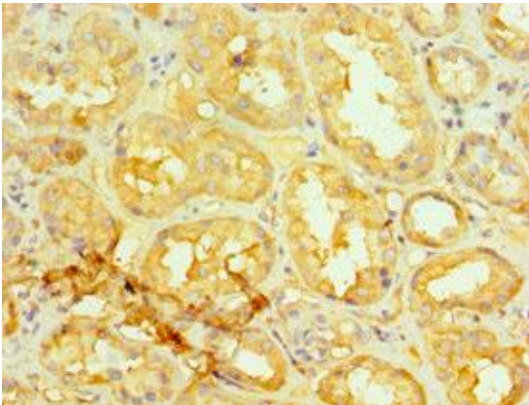
PBS with 0.02% sodium azide, 50% glycerol, pH7.3.

## Product Images

---



Immunohistochemistry of paraffin-embedded human colon cancer using PACO43241 at dilution of 1:100.



Immunohistochemistry of paraffin-embedded human kidney tissue using PACO43241 at dilution of 1:100.