

DPP7 Antibody



PACO43238

Product Information

Size:

50ul

Reactivity:

Human, Rat

Source:

Rabbit

Isotype:

IgG

Applications:

ELISA, WB, IHC

Recommended dilutions:

ELISA:1:2000-1:10000, WB:1:500-1:2000,
IHC:1:20-1:200

Protein Background:

Plays an important role in the degradation of some oligopeptides.

Gene ID:

DPP7

Uniprot

Q9UHL4

Synonyms:

Dipeptidyl peptidase 2 (EC 3.4.14.2) (Dipeptidyl aminopeptidase II) (Dipeptidyl peptidase 7) (Dipeptidyl peptidase II) (DPP II) (Quiescent cell proline dipeptidase), DPP7, DPP2 QPP

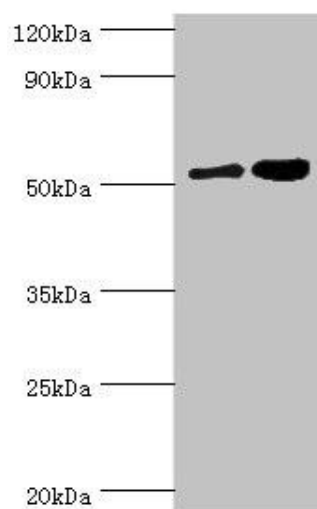
Immunogen:

Recombinant Human Dipeptidyl peptidase 2 protein (190-410AA).

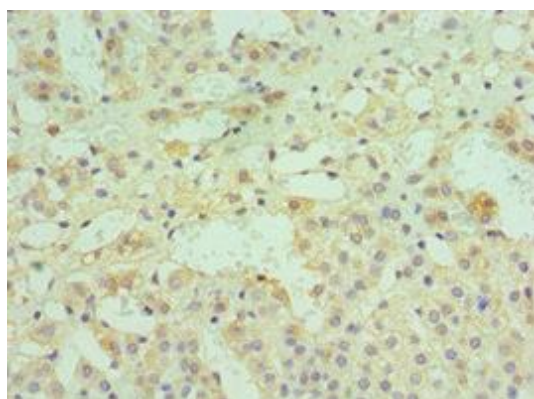
Storage:

PBS with 0.02% sodium azide, 50% glycerol, pH7.3.

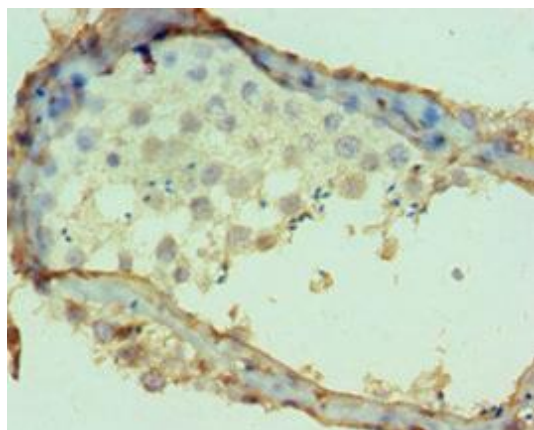
Product Images



Western blot. All lanes: Dipeptidyl peptidase 2 antibody at 6 μ g/ml. Lane 1: K562 whole cell lysate. Lane 2: Rat brain tissue. Secondary: Goat polyclonal to rabbit IgG at 1/10000 dilution. Predicted band size: 54 kDa. Observed band size: 54 kDa.



Immunohistochemistry of paraffin-embedded human adrenal gland tissue using PACO43238 at dilution of 1:100.



Immunohistochemistry of paraffin-embedded human testis tissue using PACO43238 at dilution of 1:100.