

## Product Information

**Size:**

50ul

**Reactivity:**

Human, Rat

**Source:**

Rabbit

**Isotype:**

IgG

**Applications:**

ELISA, WB, IHC, IP

**Recommended dilutions:**

ELISA:1:2000-1:10000, WB:1:1000-1:5000,  
IHC:1:20-1:200, IP:1:200-1:2000

**Protein Background:**

Critical negative regulator of cardiac hypertrophy and a positive inotropic regulator. Crucial regulator of cellular iron homeostasis and hemoglobin maturation. May play a role in regulating the function of the thioredoxin system. Does not possess any thioredoxin activity since it lacks the conserved motif that is essential for catalytic activity.

**Gene ID:**

GLRX3

**Uniprot**

O76003

**Synonyms:**

Glutaredoxin-3 (PKC-interacting cousin of thioredoxin) (PICOT) (PKC-theta-interacting protein) (PKCq-interacting protein) (Thioredoxin-like protein 2), GLRX3, PICOT TXNL2

**Immunogen:**

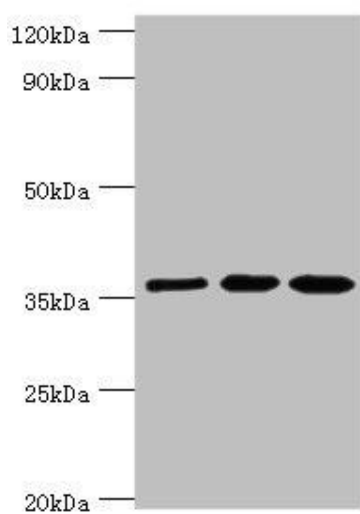
Recombinant Human Glutaredoxin-3 protein (1-335AA).

**Storage:**

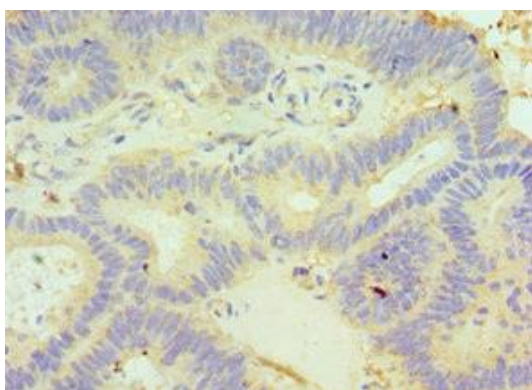
PBS with 0.02% sodium azide, 50% glycerol, pH7.3.

## Product Images

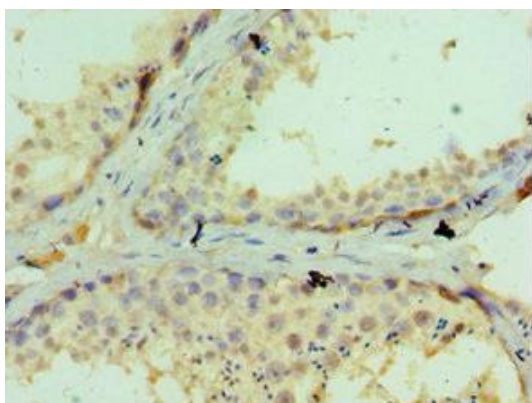
---



Western blot. All lanes: Glutaredoxin-3 antibody at 10 $\mu$ g/ml. Lane 1: Rat brain tissue. Lane 2: HepG2 whole cell lysate. Lane 3: Hela whole cell lysate. Secondary. Goat polyclonal to rabbit IgG at 1/10000 dilution. Predicted band size: 37 kDa. Observed band size: 37 kDa.



Immunohistochemistry of paraffin-embedded human colon cancer using PACO43231 at dilution of 1:100.



Immunohistochemistry of paraffin-embedded human testis tissue using PACO43231 at dilution of 1:100.