

PACO43211

---

## Product Information

**Size:**

50ul

**Reactivity:**

Human

**Source:**

Rabbit

**Isotype:**

IgG

**Applications:**

ELISA, IHC, IF

**Recommended dilutions:**

ELISA:1:2000-1:10000, IHC:1:20-1:200,  
IF:1:50-1:200

**Protein Background:**

Essential component of the renin-angiotensin system (RAS), a potent regulator of blood pressure, body fluid and electrolyte homeostasis. Angiotensin-2: acts directly on vascular smooth muscle as a potent vasoconstrictor, affects cardiac contractility and heart rate through its action on the sympathetic nervous system, and alters renal sodium and water absorption through its ability to stimulate the zona glomerulosa cells of the adrenal cortex to synthesize and secrete aldosterone. Angiotensin-3: stimulates aldosterone release. Angiotensin 1-7: is a ligand for the G-protein coupled receptor MAS1. Has vasodilator and antidiuretic effects. Has an antithrombotic effect that involves MAS1-mediated release of nitric oxide from platelets.

**Gene ID:**

AGT

**Uniprot**

P01019

**Synonyms:**

Angiotensinogen (Serpina8) [Cleaved into: Angiotensin-1 (Angiotensin 1-10) (Angiotensin I) (Ang I); Angiotensin-2 (Angiotensin 1-8) (Angiotensin II) (Ang II); Angiotensin-3 (Angiotensin 2-8) (Angiotensin III) (Ang III) (Des-Asp[1]-angiotensin II); Angiotensin-4 (Angiotensin 3-8) (Angiotensin IV) (Ang IV); Angiotensin 1-9; Angiotensin 1-7; Angiotensin 1-5; Angiotensin 1-4], AGT, SERPINA8

**Immunogen:**

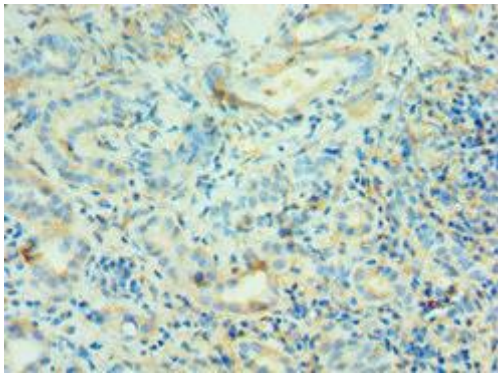
Recombinant Human Angiotensinogen protein (35-285AA).

**Storage:**

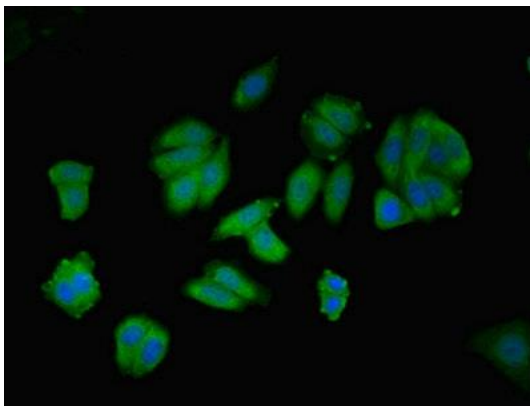
PBS with 0.02% sodium azide, 50% glycerol, pH7.3.

## Product Images

---



Immunohistochemistry of paraffin-embedded human kidney tissue using PACO43211 at dilution of 1:100.



Immunofluorescent analysis of HepG2 cells using PACO43211 at dilution of 1:100 and Alexa Fluor 488-conjugated AffiniPure Goat Anti-Rabbit IgG(H+L).