

BCL7C Antibody



PACO43185

Product Information

Size:

50ul

Reactivity:

Human

Source:

Rabbit

Isotype:

IgG

Applications:

ELISA, IHC

Recommended dilutions:

ELISA:1:2000-1:10000, IHC:1:20-1:200

Protein Background:

May play an anti-apoptotic role.

Gene ID:

BCL7C

Uniprot

Q8WUZ0

Synonyms:

B-cell CLL/lymphoma 7 protein family member C, BCL7C

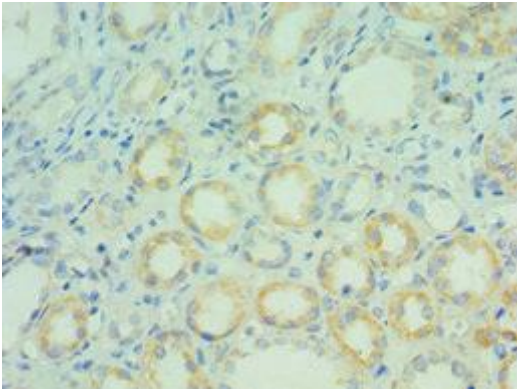
Immunogen:

Recombinant Human B-cell CLL/lymphoma 7 protein family member C protein (58-217AA).

Storage:

PBS with 0.02% sodium azide, 50% glycerol, pH7.3.

Product Images



Immunohistochemistry of paraffin-embedded human kidney tissue using PACO43185 at dilution of 1:100.