

PACO43175

Product Information

Size:

50ul

Reactivity:

Human, Mouse

Source:

Rabbit

Isotype:

IgG

Applications:

ELISA, WB, IHC

Recommended dilutions:

ELISA:1:2000-1:10000, WB:1:500-1:2000,
IHC:1:20-1:200

Protein Background:

Can insert into membranes and form poorly selective ion channels that may also transport chloride ions. Channel activity depends on the pH. Membrane insertion seems to be redox-regulated and may occur only under oxidizing conditions. Promotes cell-surface expression of HRH3. Has alternate cellular functions like a potential role in angiogenesis or in maintaining apical-basolateral membrane polarity during mitosis and cytokinesis. Could also promote endothelial cell proliferation and regulate endothelial morphogenesis.

Gene ID:

CLIC4

Uniprot

Q9Y696

Synonyms:

Chloride intracellular channel protein 4 (Intracellular chloride ion channel protein p64H1), CLIC4

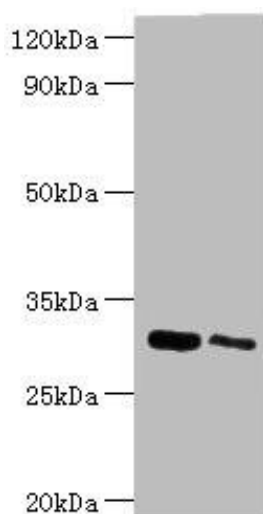
Immunogen:

Recombinant Human Chloride intracellular channel protein 4 protein (1-253AA).

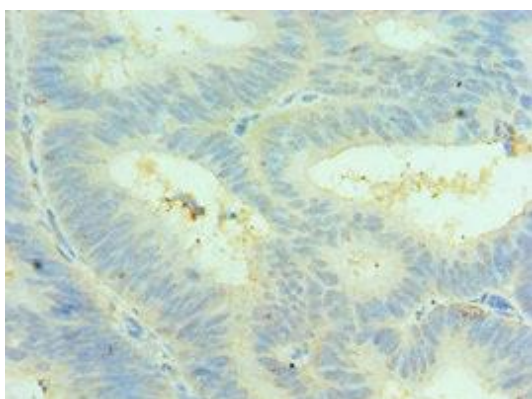
Storage:

PBS with 0.02% sodium azide, 50% glycerol, pH7.3.

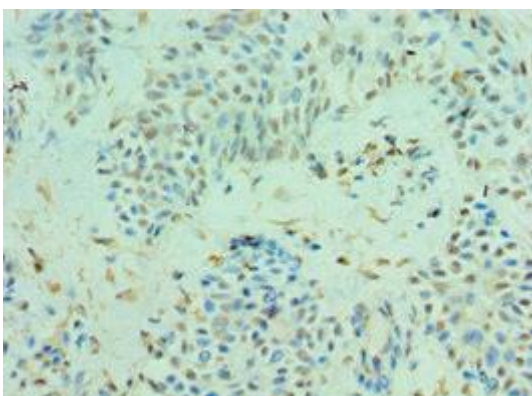
Product Images



Western blot. All lanes: Chloride intracellular channel protein 4 antibody at 5 μ g/ml. Lane 1: Mouse kidney tissue. Lane 2: Mouse ovarian tissue. Secondary. Goat polyclonal to rabbit IgG at 1/10000 dilution. Predicted band size: 29 kDa. Observed band size: 29 kDa.



Immunohistochemistry of paraffin-embedded human colon cancer using PACO43175 at dilution of 1:100.



Immunohistochemistry of paraffin-embedded human breast cancer using PACO43175 at dilution of 1:100.