

Product Information

Size:

50ul

Reactivity:

Human

Source:

Rabbit

Isotype:

IgG

Applications:

ELISA, IHC

Recommended dilutions:

ELISA:1:2000-1:10000, IHC:1:20-1:200

Protein Background:

Cytokine with immunoregulatory activity. May promote the transition between innate and adaptive immunity. Induces the production of IgG1 and IgG3 in B-cells. May play a role in proliferation and maturation of natural killer (NK) cells in synergy with IL15. May regulate proliferation of mature B- and T-cells in response to activating stimuli. In synergy with IL15 and IL18 stimulates interferon gamma production in T-cells and NK cells. During T-cell mediated immune response may inhibit dendritic cells (DC) activation and maturation.

Gene ID:

IL21

Uniprot

Q9HBE4

Synonyms:

Interleukin-21 (IL-21) (Za11), IL21

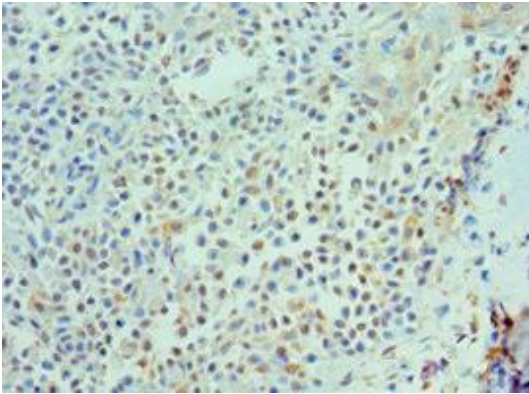
Immunogen:

Recombinant Human Interleukin-21 protein (25-162AA).

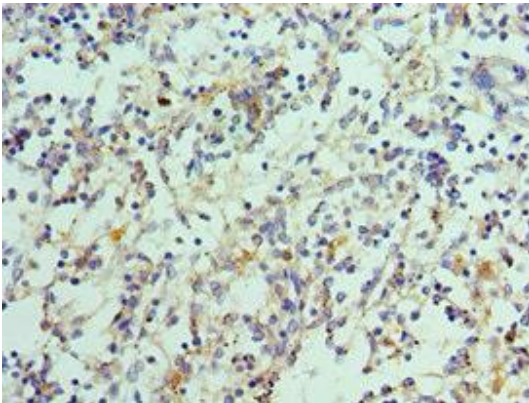
Storage:

PBS with 0.02% sodium azide, 50% glycerol, pH7.3.

Product Images



Immunohistochemistry of paraffin-embedded human breast cancer using PACO43168 at dilution of 1:100.



Immunohistochemistry of paraffin-embedded human spleen tissue using PACO43168 at dilution of 1:100.