

PACO43161

Product Information

Size:

50ul

Reactivity:

Human

Source:

Rabbit

Isotype:

IgG

Applications:

ELISA, IHC

Recommended dilutions:

ELISA:1:2000-1:10000, IHC:1:20-1:200

Protein Background:**Gene ID:**

FAP

Uniprot

Q12884

Synonyms:

Prolyl endopeptidase FAP (EC 3.4.21.26) (170 kDa melanoma membrane-bound gelatinase) (Dipeptidyl peptidase FAP) (EC 3.4.14.5) (Fibroblast activation protein alpha) (FAPalpha) (Gelatin degradation protease FAP) (EC 3.4.21. -) (Integral membrane serine protease) (Post-proline cleaving enzyme)

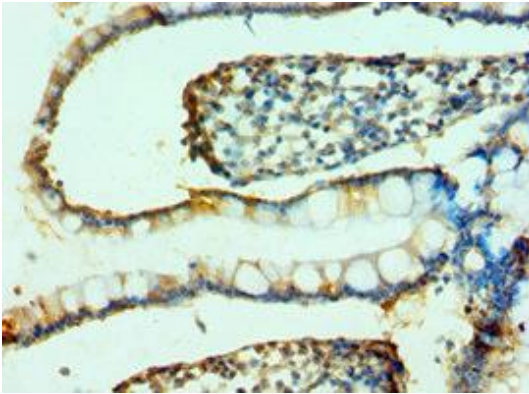
Immunogen:

Recombinant Human Prolyl endopeptidase FAP protein (26-280AA).

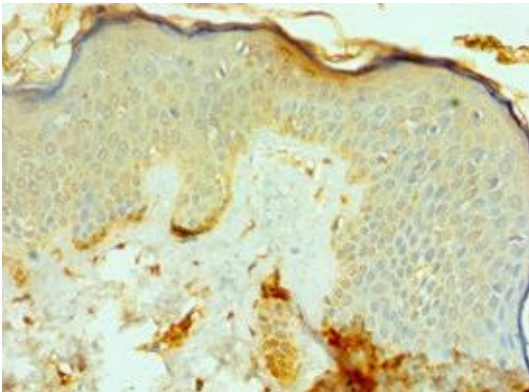
Storage:

PBS with 0.02% sodium azide, 50% glycerol, pH7.3.

Product Images



Immunohistochemistry of paraffin-embedded human small intestine tissue using PACO43161 at dilution of 1:100.



Immunohistochemistry of paraffin-embedded human skin tissue using PACO43161 at dilution of 1:100.