

Product Information

Size:

50ul

Reactivity:

Human

Source:

Rabbit

Isotype:

IgG

Applications:

ELISA, IHC

Recommended dilutions:

ELISA:1:2000-1:10000, IHC:1:20-1:200

Protein Background:

Has 3'-5' poly(A) exoribonuclease activity for synthetic poly(A) RNA substrate. Its function seems to be partially redundant with that of CNOT7. Catalytic component of the CCR4-NOT complex which is linked to various cellular processes including bulk mRNA degradation, miRNA-mediated repression, translational repression during translational initiation and general transcription regulation. During miRNA-mediated repression the complex seems also to act as translational repressor during translational initiation. Additional complex functions may be a consequence of its influence on mRNA expression. Associates with members of the BTG family such as TOB1 and BTG2 and is required for their anti-proliferative activity.

Gene ID:

CNOT8

Uniprot

Q9UFF9

Synonyms:

CCR4-NOT transcription complex subunit 8 (EC 3.1.13.4) (CAF1-like protein) (CALIFp) (CAF2) (CCR4-associated factor 8) (Caf1b), CNOT8, CALIF POP2

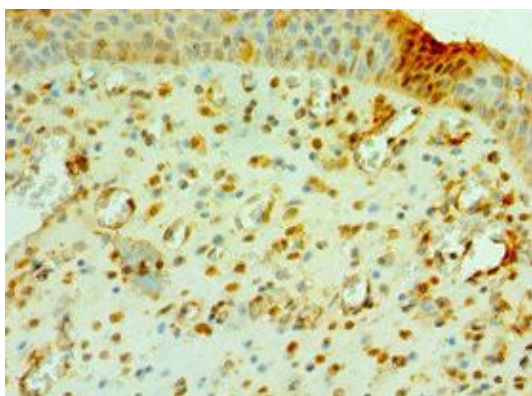
Immunogen:

Recombinant Human CCR4-NOT transcription complex subunit 8 protein (1-292AA).

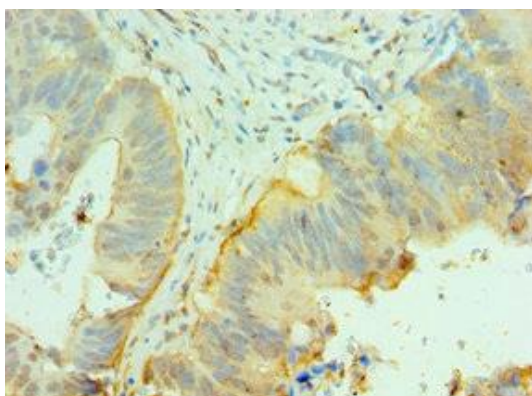
Storage:

PBS with 0.02% sodium azide, 50% glycerol, pH7.3.

Product Images



Immunohistochemistry of paraffin-embedded human prostate cancer using PACO43142 at dilution of 1:100.



Immunohistochemistry of paraffin-embedded human colon cancer using PACO43142 at dilution of 1:100.