

CLDN2 Antibody



PACO43141

Product Information

Size:

50ul

Reactivity:

Human

Source:

Rabbit

Isotype:

IgG

Applications:

ELISA, IHC, IF

Recommended dilutions:

ELISA:1:2000-1:10000, IHC:1:20-1:200,
IF:1:50-1:200

Protein Background:

Plays a major role in tight junction-specific obliteration of the intercellular space, through calcium-independent cell-adhesion activity.

Gene ID:

CLDN2

Uniprot

P57739

Synonyms:

Claudin-2 (SP82), CLDN2

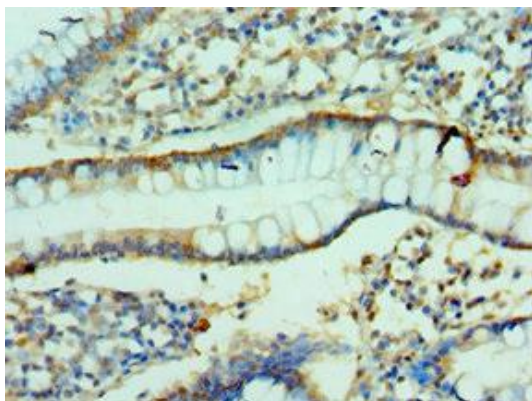
Immunogen:

Recombinant Human Claudin-2 protein (30-230AA).

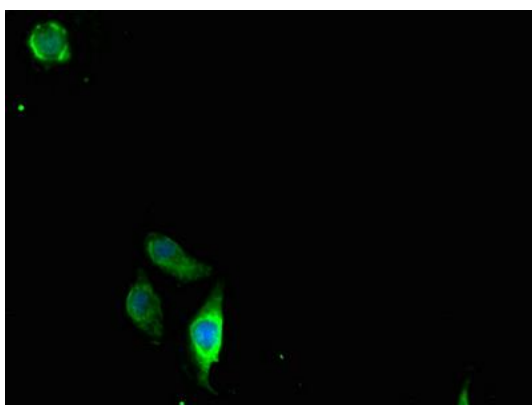
Storage:

PBS with 0.02% sodium azide, 50% glycerol, pH7.3.

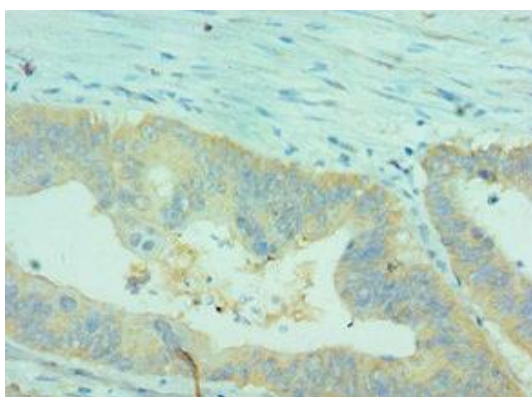
Product Images



Immunohistochemistry of paraffin-embedded human small intestine tissue using PACO43141 at dilution of 1:100.



Immunofluorescent analysis of A549 cells using PACO43141 at dilution of 1:100 and Alexa Fluor 488-conjugated AffiniPure Goat Anti-Rabbit IgG(H+L).



Immunohistochemistry of paraffin-embedded human colon cancer using PACO43141 at dilution of 1:100.