

Product Information

Size:

50ul

Reactivity:

Human

Source:

Rabbit

Isotype:

IgG

Applications:

ELISA, WB, IHC

Recommended dilutions:

ELISA:1:2000-1:10000, WB:1:200-1:1000,
IHC:1:20-1:200

Protein Background:

Component of a Polycomb group (PcG) multiprotein PRC1-like complex, a complex class required to maintain the transcriptionally repressive state of many genes, including Hox genes, throughout development. PcG PRC1 complex acts via chromatin remodeling and modification of histones; it mediates monoubiquitination of histone H2A 'Lys-119', rendering chromatin heritably changed in its expressibility.

Gene ID:

CBX8

Uniprot

Q9HC52

Synonyms:

Chromobox protein homolog 8 (Polycomb 3 homolog) (Pc3) (hPc3) (Rectachrome 1),
CBX8, PC3 RC1

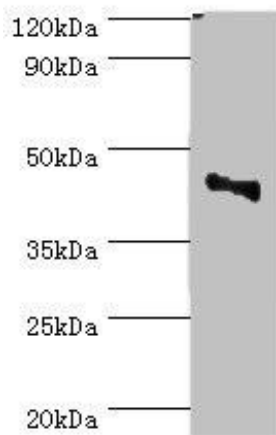
Immunogen:

Recombinant Human Chromobox protein homolog 8 protein (80-280AA).

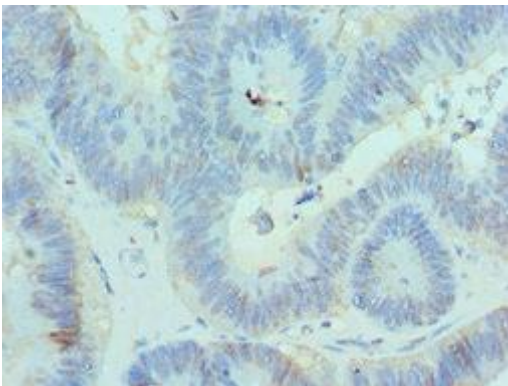
Storage:

PBS with 0.02% sodium azide, 50% glycerol, pH7.3.

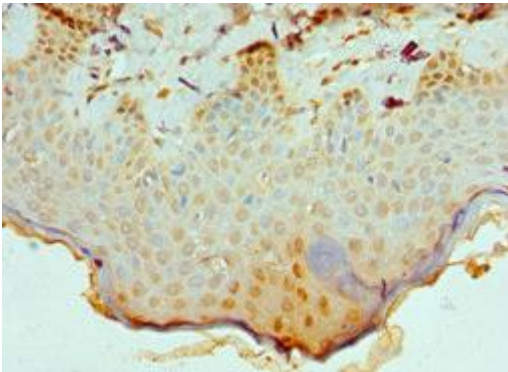
Product Images



Western blot. All lanes: CBX8 antibody at 2 μ g/ml + Jurkat whole cell lysate. Secondary. Goat polyclonal to rabbit IgG at 1/10000 dilution. Predicted band size: 43 kDa. Observed band size: 43 kDa.



Immunohistochemistry of paraffin-embedded human colon cancer using PACO43137 at dilution of 1:100.



Immunohistochemistry of paraffin-embedded human skin tissue using PACO43137 at dilution of 1:100.