

Product Information

Size:

50ul

Reactivity:

Human

Source:

Rabbit

Isotype:

IgG

Applications:

ELISA, IHC

Recommended dilutions:

ELISA:1:2000-1:10000, IHC:1:20-1:200

Protein Background:

Calcium-dependent nucleotidase with a preference for UDP. The order of activity with different substrates is UDP > GDP > UTP > GTP. Has very low activity towards ADP and even lower activity towards ATP. Does not hydrolyze AMP and GMP. Involved in proteoglycan synthesis.

Gene ID:

CANT1

Uniprot

Q8WVQ1

Synonyms:

Soluble calcium-activated nucleotidase 1 (SCAN-1) (EC 3.6.1.6) (Apyrase homolog) (Putative MAPK-activating protein PM09) (Putative NF-kappa-B-activating protein 107), CANT1, SHAPY

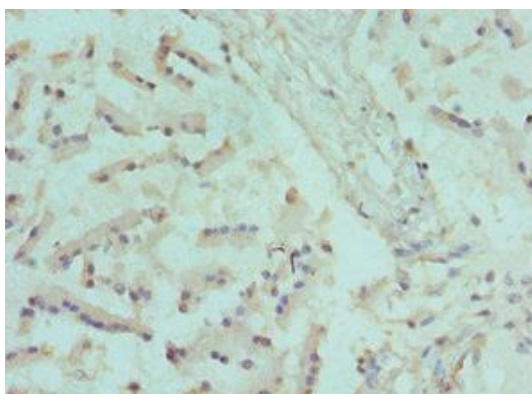
Immunogen:

Recombinant Human Soluble calcium-activated nucleotidase 1 protein (102-401AA).

Storage:

PBS with 0.02% sodium azide, 50% glycerol, pH7.3.

Product Images



Immunohistochemistry of paraffin-embedded human prostate tissue using PACO43135 at dilution of 1:100.