

PLIN2 Antibody



PACO43119

Product Information

Size:

50ul

Reactivity:

Human

Source:

Rabbit

Isotype:

IgG

Applications:

ELISA, WB, IHC

Recommended dilutions:

ELISA:1:2000-1:10000, WB:1:200-1:1000,
IHC:1:20-1:200

Protein Background:

May be involved in development and maintenance of adipose tissue.

Gene ID:

PLIN2

Uniprot

Q99541

Synonyms:

Perilipin-2 (Adipophilin) (Adipose differentiation-related protein) (ADRP), PLIN2, ADFP

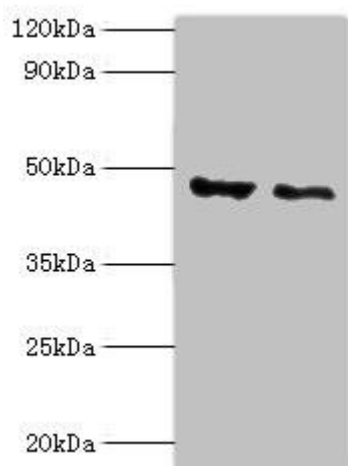
Immunogen:

Recombinant Human Perilipin-2 protein (168-437AA).

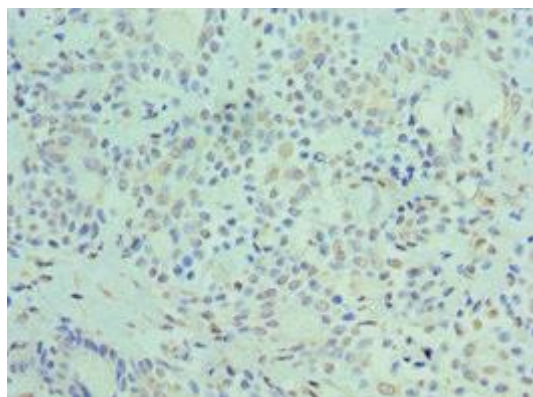
Storage:

PBS with 0.02% sodium azide, 50% glycerol, pH7.3.

Product Images



Western blot. All lanes: PLIN2 antibody at 4 μ g/ml. Lane 1: HepG2 whole cell lysate. Lane 2: Hela whole cell lysate. Secondary: Goat polyclonal to rabbit IgG at 1/10000 dilution. Predicted band size: 48 kDa. Observed band size: 48 kDa.



Immunohistochemistry of paraffin-embedded human breast cancer using PACO43119 at dilution of 1:100.