

## Product Information

**Size:**

50ul

**Reactivity:**

Human

**Source:**

Rabbit

**Isotype:**

IgG

**Applications:**

ELISA, WB, IHC

**Recommended dilutions:**

ELISA:1:2000-1:10000, WB:1:200-1:1000,  
IHC:1:20-1:200

**Protein Background:**

Transcriptional repressor which forms a core component of the circadian clock. The circadian clock, an internal time-keeping system, regulates various physiological processes through the generation of approximately 24 hour circadian rhythms in gene expression, which are translated into rhythms in metabolism and behavior. It is derived from the Latin roots 'circa' (about) and 'diem' (day) and acts as an important regulator of a wide array of physiological functions including metabolism, sleep, body temperature, blood pressure, endocrine, immune, cardiovascular, and renal function.

**Gene ID:**

CRY2

**Uniprot**

Q49AN0

**Synonyms:**

Cryptochrome-2, CRY2, KIAA0658

**Immunogen:**

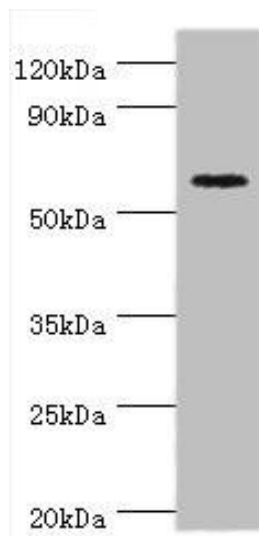
Recombinant Human Cryptochrome-2 protein (434-593AA).

**Storage:**

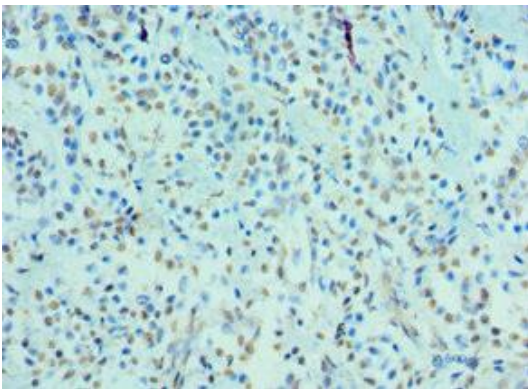
PBS with 0.02% sodium azide, 50% glycerol, pH7.3.

## Product Images

---



Western blot. All lanes: Cryptochrome-2 antibody at 14 $\mu$ g/ml + HepG2 whole cell lysate. Secondary. Goat polyclonal to rabbit IgG at 1/10000 dilution. Predicted band size: 67, 61 kDa. Observed band size: 67 kDa.



Immunohistochemistry of paraffin-embedded human breast cancer using PACO43101 at dilution of 1:100.