

Product Information

Size:

50ul

Reactivity:

Human, Mouse

Source:

Rabbit

Isotype:

IgG

Applications:

ELISA, WB, IHC

Recommended dilutions:

ELISA:1:2000-1:10000, WB:1:500-1:2000,
IHC:1:20-1:200

Protein Background:

Polycomb group (PcG) protein. Catalytic subunit of the PRC2/EED-EZH1 complex, which methylates 'Lys-27' of histone H3, leading to transcriptional repression of the affected target gene. Able to mono-, di- and trimethylate 'Lys-27' of histone H3 to form H3K27me1, H3K27me2 and H3K27me3, respectively. Required for embryonic stem cell derivation and self-renewal, suggesting that it is involved in safeguarding embryonic stem cell identity. Compared to EZH2-containing complexes, it is less abundant in embryonic stem cells, has weak methyltransferase activity and plays a less critical role in forming H3K27me3, which is required for embryonic stem cell identity and proper differentiation.

Gene ID:

EZH1

Uniprot

Q92800

Synonyms:

Histone-lysine N-methyltransferase EZH1 (EC 2.1.1.43) (ENX-2) (Enhancer of zeste homolog 1), EZH1, KIAA0388

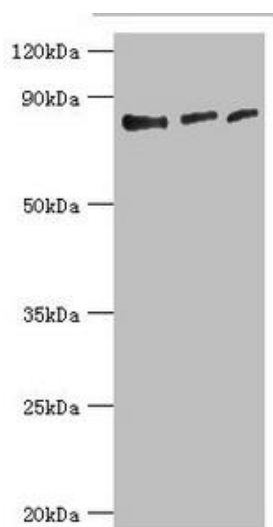
Immunogen:

Recombinant Human Histone-lysine N-methyltransferase EZH1 protein (160-280AA).

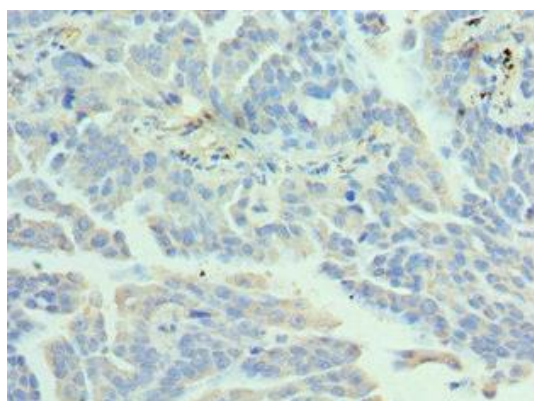
Storage:

PBS with 0.02% sodium azide, 50% glycerol, pH7.3.

Product Images



Western blot. All lanes: Histone-lysine N-methyltransferase EZH1 antibody at 4 μ g/ml. Lane 1: HeLa whole cell lysate. Lane 2: HL60 whole cell lysate. Lane 3: Mouse gonad tissue. Secondary. Goat polyclonal to rabbit IgG at 1/10000 dilution. Predicted band size: 86, 87, 81, 77, 69 kDa. Observed band size: 86 kDa.



Immunohistochemistry of paraffin-embedded human lung cancer using PACO43098 at dilution of 1:100.