

# TAB1 Antibody



PACO43089

---

## Product Information

**Size:**

50ul

**Reactivity:**

Human, Mouse

**Source:**

Rabbit

**Isotype:**

IgG

**Applications:**

ELISA, WB, IHC

**Recommended dilutions:**

ELISA:1:2000-1:10000, WB:1:500-1:2000,  
IHC:1:20-1:200

**Protein Background:**

May be an important signaling intermediate between TGFB receptors and MAP3K7/TAK1. May play an important role in mammalian embryogenesis.

**Gene ID:**

TAB1

**Uniprot**

Q15750

**Synonyms:**

TGF-beta-activated kinase 1 and MAP3K7-binding protein 1 (Mitogen-activated protein kinase kinase kinase 7-interacting protein 1) (TGF-beta-activated kinase 1-binding protein 1) (TAK1-binding protein 1), TAB1, MAP3K7IP1

**Immunogen:**

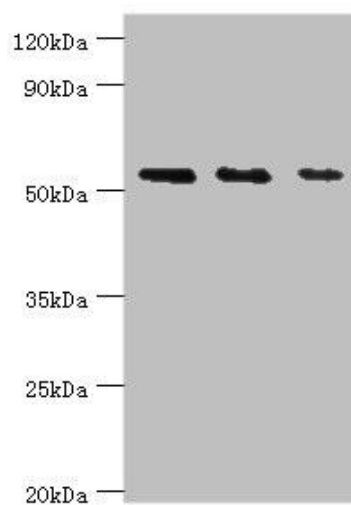
Recombinant Human TGF-beta-activated kinase 1 and MAP3K7-binding protein 1 protein (205-504AA).

**Storage:**

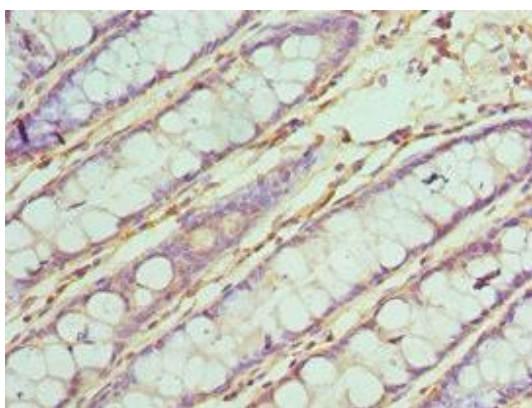
PBS with 0.02% sodium azide, 50% glycerol, pH7.3.

## Product Images

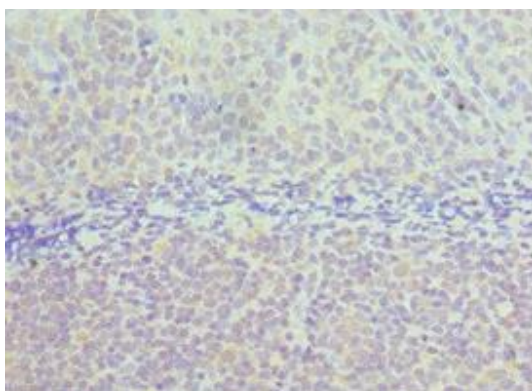
---



Western blot. All lanes: TGF-beta-activated kinase 1 and MAP3K7-binding protein 1 antibody at 7 $\mu$ g/ml. Lane 1: K562 whole cell lysate. Lane 2: Hela whole cell lysate. Lane 3: Mouse heart tissue. Secondary. Goat polyclonal to rabbit IgG at 1/10000 dilution. Predicted band size: 55, 50 kDa. Observed band size: 55 kDa.



Immunohistochemistry of paraffin-embedded human colon tissue using PACO43089 at dilution of 1:100.



Immunohistochemistry of paraffin-embedded human tonsil tissue using PACO43089 at dilution of 1:100.