

SMARCB1 Antibody



PACO43087

Product Information

Size:

50ul

Reactivity:

Human, Mouse

Source:

Rabbit

Isotype:

IgG

Applications:

ELISA, WB, IHC

Recommended dilutions:

ELISA:1:2000-1:10000, WB:1:500-1:2000,
IHC:1:20-1:200

Protein Background:**Gene ID:**

SMARCB1

Uniprot

Q12824

Synonyms:

SWI/SNF-related matrix-associated actin-dependent regulator of chromatin subfamily B member 1 (BRG1-associated factor 47) (BAF47) (Integrase interactor 1 protein) (SNF5 homolog) (hSNF5), SMARCB1, BAF47 INI1 SNF5L1

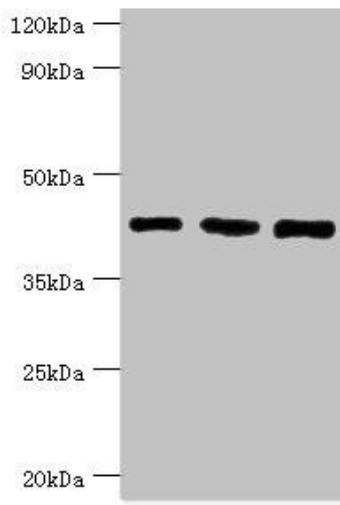
Immunogen:

Recombinant Human SWI/SNF-related matrix-associated actin-dependent regulator of chromatin subfamily B member 1 protein (86-385AA).

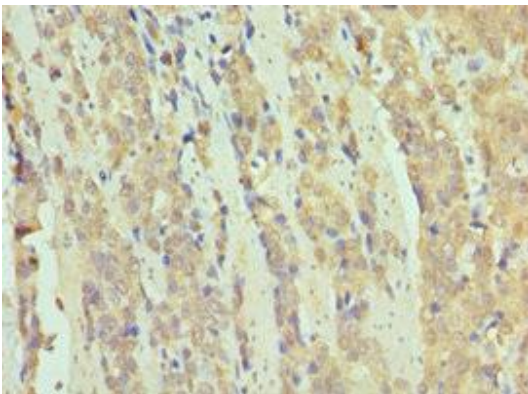
Storage:

PBS with 0.02% sodium azide, 50% glycerol, pH7.3.

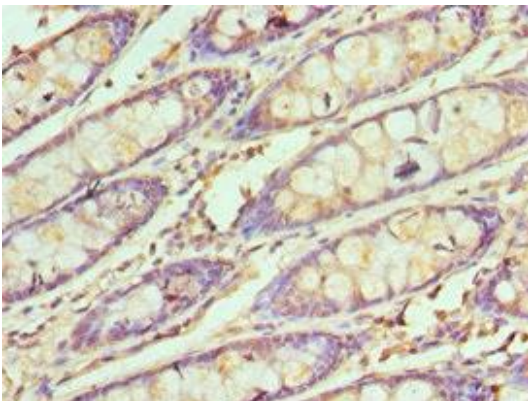
Product Images



Western blot. All lanes: SWI/SNF-related matrix-associated actin-dependent regulator of chromatin subfamily B member 1 antibody at 8 μ g/ml. Lane 1: Hela whole cell lysate. Lane 2: 293T whole cell lysate. Lane 3: Mouse stomach tissue. Secondary. Goat polyclonal to rabbit IgG at 1/10000 dilution. Predicted band size: 45, 44 kDa. Observed band size: 45 kDa.



Immunohistochemistry of paraffin-embedded human colon cancer using PACO43087 at dilution of 1:100.



Immunohistochemistry of paraffin-embedded human colon tissue using PACO43087 at dilution of 1:100.