

PACO43084

---

## Product Information

**Size:**

50ul

**Reactivity:**

Human

**Source:**

Rabbit

**Isotype:**

IgG

**Applications:**

ELISA, WB, IHC

**Recommended dilutions:**

ELISA:1:2000-1:10000, WB:1:200-1:1000,  
IHC:1:20-1:200

**Protein Background:**

Calcium-regulated non-lysosomal thiol-protease which catalyze limited proteolysis of substrates involved in cytoskeletal remodeling and signal transduction.

**Gene ID:**

CAPN1

**Uniprot**

P07384

**Synonyms:**

Calpain-1 catalytic subunit (EC 3.4.22.52) (Calcium-activated neutral proteinase 1) (CANP 1) (Calpain mu-type) (Calpain-1 large subunit) (Cell proliferation-inducing gene 30 protein) (Micromolar-calpain) (muCANP), CAPN1, CANPL1

**Immunogen:**

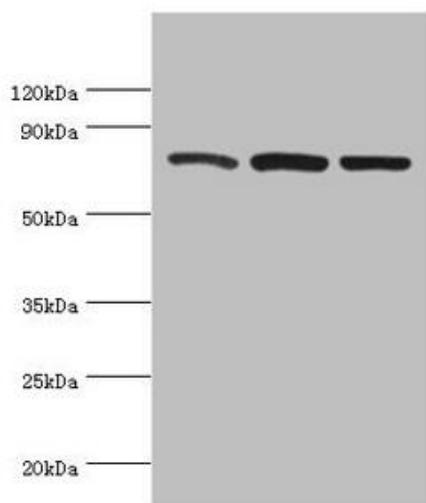
Recombinant Human Calpain-1 catalytic subunit protein (20-330AA).

**Storage:**

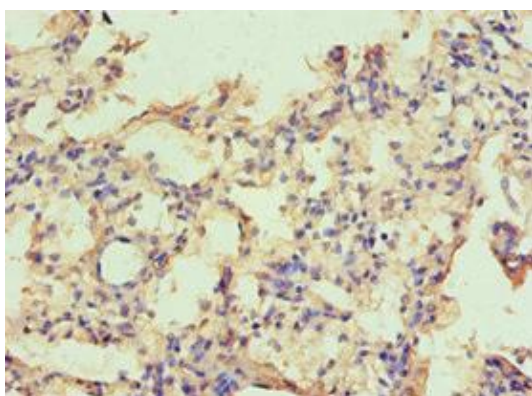
PBS with 0.02% sodium azide, 50% glycerol, pH7.3.

## Product Images

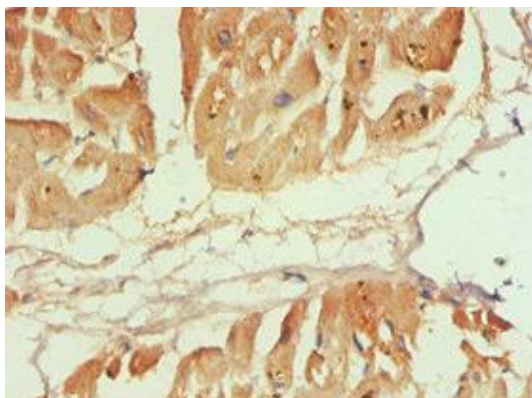
---



Western blot. All lanes: Calpain-1 catalytic subunit antibody at 2 $\mu$ g/ml. Lane 1: A431 whole cell lysate. Lane 2: Hela whole cell lysate. Lane 3: Jurkat whole cell lysate. Secondary. Goat polyclonal to rabbit IgG at 1/10000 dilution. Predicted band size: 82 kDa. Observed band size: 82 kDa.



Immunohistochemistry of paraffin-embedded human lung tissue using PACO43084 at dilution of 1:100.



Immunohistochemistry of paraffin-embedded human heart tissue using PACO43084 at dilution of 1:100.