

Product Information

Size:

50ul

Reactivity:

Human

Source:

Rabbit

Isotype:

IgG

Applications:

ELISA, WB, IHC

Recommended dilutions:

ELISA:1:2000-1:10000, WB:1:200-1:1000,
IHC:1:20-1:200

Protein Background:

Contributes to histone modification. May position the N-terminus of histone H3 for efficient trimethylation at 'Lys-4'. As part of the MLL1/MLL complex it is involved in methylation and dimethylation at 'Lys-4' of histone H3. H3 'Lys-4' methylation represents a specific tag for epigenetic transcriptional activation. As part of the NSL complex it may be involved in acetylation of nucleosomal histone H4 on several lysine residues. May regulate osteoblasts differentiation.

Gene ID:

WDR5

Uniprot

P61964

Synonyms:

WD repeat-containing protein 5 (BMP2-induced 3-kb gene protein), WDR5, BIG3

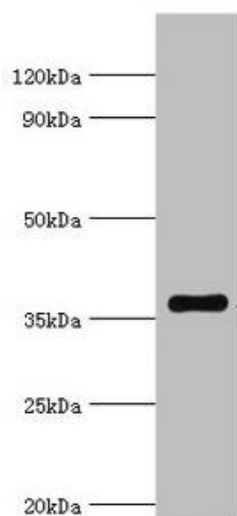
Immunogen:

Recombinant Human WD repeat-containing protein 5 protein (1-334AA).

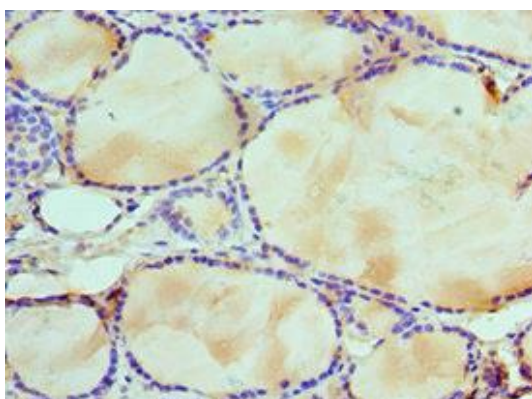
Storage:

PBS with 0.02% sodium azide, 50% glycerol, pH7.3.

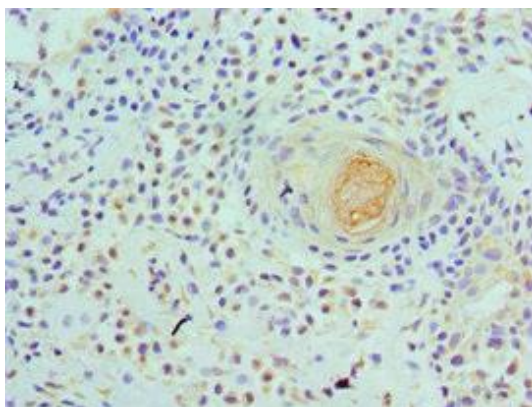
Product Images



Western blot. All lanes: WDR5 antibody at 2 μ g/ml + A431 whole cell lysate. Secondary. Goat polyclonal to rabbit IgG at 1/10000 dilution. Predicted band size: 37 kDa. Observed band size: 37 kDa.



Immunohistochemistry of paraffin-embedded human thyroid tissue using PACO43081 at dilution of 1:100.



Immunohistochemistry of paraffin-embedded human breast tissue using PACO43081 at dilution of 1:100.