

CLEC12A Antibody



PACO43074

Product Information

Size:

50ul

Reactivity:

Human, Mouse

Source:

Rabbit

Isotype:

IgG

Applications:

ELISA, WB, IHC

Recommended dilutions:

ELISA:1:2000-1:10000, WB:1:500-1:2000,
IHC:1:20-1:200

Protein Background:

Cell surface receptor that modulates signaling cascades and mediates tyrosine phosphorylation of target MAP kinases.

Gene ID:

CLEC12A

Uniprot

Q5QGZ9

Synonyms:

C-type lectin domain family 12 member A (C-type lectin-like molecule 1) (CLL-1) (Dendritic cell-associated lectin 2) (DCAL-2) (Myeloid inhibitory C-type lectin-like receptor) (MICL), CLEC12A, CLL1 DCAL2 MICL

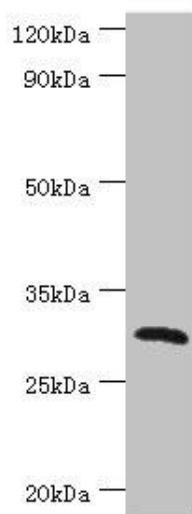
Immunogen:

Recombinant Human C-type lectin domain family 12 member A protein (66-265AA).

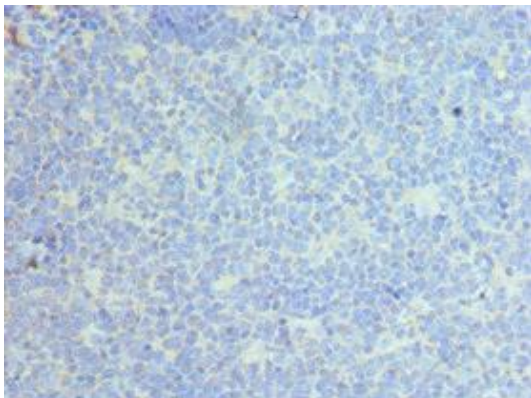
Storage:

PBS with 0.02% sodium azide, 50% glycerol, pH7.3.

Product Images



Western blot. All lanes: C-type lectin domain family 12 member A antibody at 2 μ g/ml + Mouse skeletal muscle tissue. Secondary. Goat polyclonal to rabbit IgG at 1/10000 dilution. Predicted band size: 31, 33, 9, 28, 25 kDa. Observed band size: 31 kDa.



Immunohistochemistry of paraffin-embedded human tonsil tissue using PACO43074 at dilution of 1:100.