

ALAS2 Antibody



PACO43057

Product Information

Size:

50ul

Reactivity:

Human, Mouse

Source:

Rabbit

Isotype:

IgG

Applications:

ELISA, WB, IHC

Recommended dilutions:

ELISA:1:2000-1:10000, WB:1:200-1:1000,
IHC:1:20-1:200

Protein Background:

Gene ID:

ALAS2

Uniprot

P22557

Synonyms:

5-aminolevulinate synthase, erythroid-specific, mitochondrial (ALAS-E) (EC 2.3.1.37) (5-aminolevulinic acid, synthase 2) (Delta-ALA synthase 2) (Delta-aminolevulinate synthase 2), ALAS2, ALASE ASB

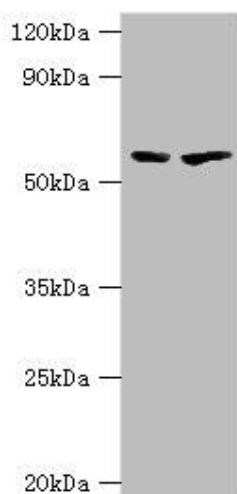
Immunogen:

Recombinant Human 5-aminolevulinate synthase, erythroid-specific, mitochondrial protein (50-320AA).

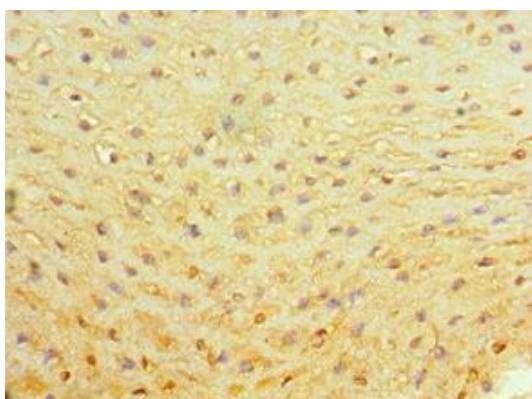
Storage:

PBS with 0.02% sodium azide, 50% glycerol, pH7.3.

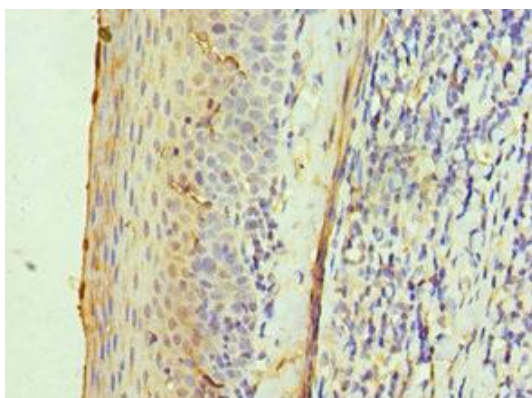
Product Images



Western blot. All lanes: 5-aminolevulinatase, erythroid-specific, mitochondrial antibody at 7 μ g/ml. Lane 1: 293T whole cell lysate. Lane 2: Mouse brain tissue. Secondary: Goat polyclonal to rabbit IgG at 1/10000 dilution. Predicted band size: 65, 61, 50, 64 kDa. Observed band size: 65 kDa.



Immunohistochemistry of paraffin-embedded human esophagus tissue using PACO43057 at dilution of 1:100.



Immunohistochemistry of paraffin-embedded human tonsil tissue using PACO43057 at dilution of 1:100.