

## Product Information

**Size:**

50ul

**Reactivity:**

Human

**Source:**

Rabbit

**Isotype:**

IgG

**Applications:**

ELISA, IHC

**Recommended dilutions:**

ELISA:1:2000-1:10000, IHC:1:20-1:200

**Protein Background:**

Acts as a chaperone during the assembly of the 26S proteasome, specifically of the base subcomplex of the PA700/19S regulatory complex (RC). In the initial step of the base subcomplex assembly is part of an intermediate PSMD5: PSMC2: PSMC1: PSMD2 module which probably assembles with a PSMD10: PSMC4: PSMC5: PAAF1 module followed by dissociation of PSMD5.

**Gene ID:**

PSMD5

**Uniprot**

Q16401

**Synonyms:**

26S proteasome non-ATPase regulatory subunit 5 (26S protease subunit S5 basic) (26S proteasome subunit S5B), PSMD5, KIAA0072

**Immunogen:**

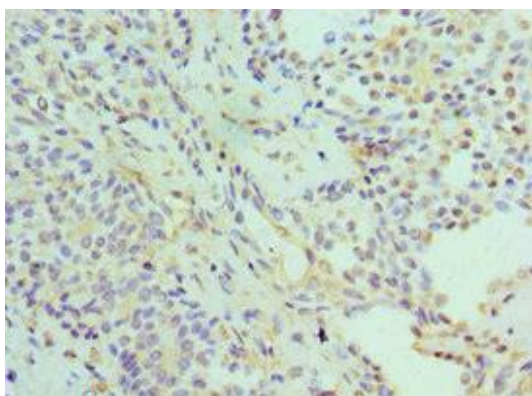
Recombinant Human 26S proteasome non-ATPase regulatory subunit 5 protein (255-504AA).

**Storage:**

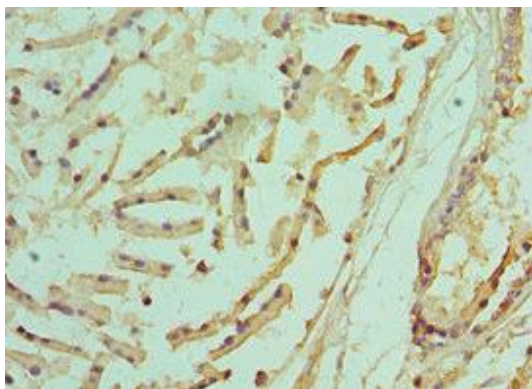
PBS with 0.02% sodium azide, 50% glycerol, pH7.3.

## Product Images

---



Immunohistochemistry of paraffin-embedded human breast cancer using PACO43046 at dilution of 1:100.



Immunohistochemistry of paraffin-embedded human prostate tissue using PACO43046 at dilution of 1:100.