

# SRPK1 Antibody



PACO43040

---

## Product Information

**Size:**

50ul

**Reactivity:**

Human

**Source:**

Rabbit

**Isotype:**

IgG

**Applications:**

ELISA, IHC

**Recommended dilutions:**

ELISA:1:2000-1:10000, IHC:1:20-1:200

**Protein Background:**

**Gene ID:**

SRPK1

**Uniprot**

Q96SB4

**Synonyms:**

SRSF protein kinase 1 (EC 2.7.11.1) (SFRS protein kinase 1) (Serine/arginine-rich protein-specific kinase 1) (SR-protein-specific kinase 1), SRPK1

**Immunogen:**

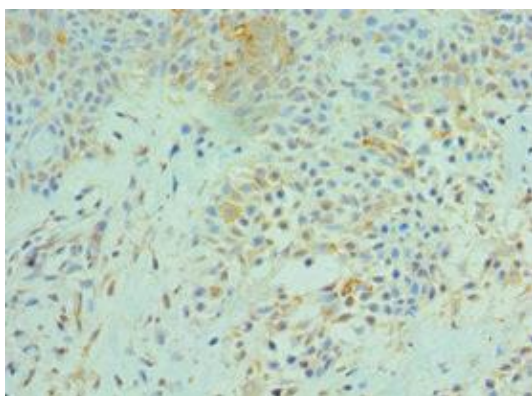
Recombinant Human SRSF protein kinase 1 protein (290-480AA).

**Storage:**

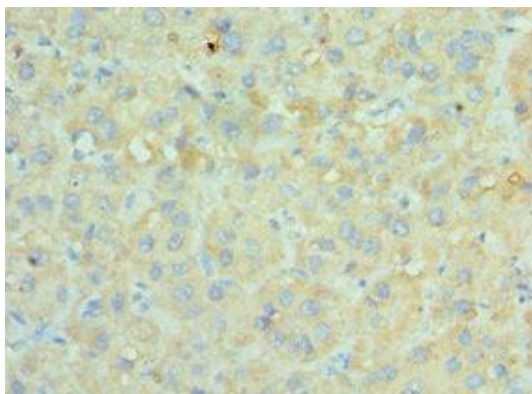
PBS with 0.02% sodium azide, 50% glycerol, pH7.3.

## Product Images

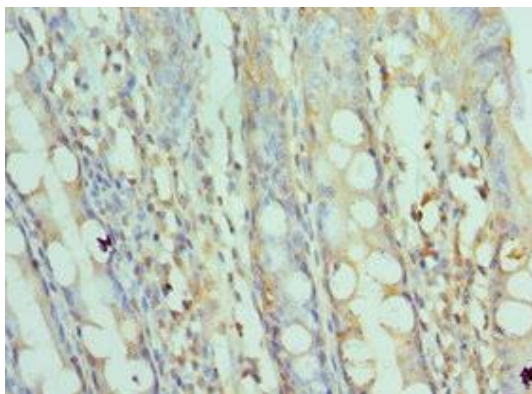
---



Immunohistochemistry of paraffin-embedded human breast cancer using PACO43040 at dilution of 1:100.



Immunohistochemistry of paraffin-embedded human liver cancer using PACO43040 at dilution of 1:100.



Immunohistochemistry of paraffin-embedded human colon tissue using PACO43040 at dilution of 1:100.