

ANTXR1 Antibody



PACO43037

Product Information

Size:

50ul

Reactivity:

Human

Source:

Rabbit

Isotype:

IgG

Applications:

ELISA, IHC

Recommended dilutions:

ELISA:1:2000-1:10000, IHC:1:20-1:200

Protein Background:

Plays a role in cell attachment and migration. Interacts with extracellular matrix proteins and with the actin cytoskeleton. Mediates adhesion of cells to type 1 collagen and gelatin, reorganization of the actin cytoskeleton and promotes cell spreading. Plays a role in the angiogenic response of cultured umbilical vein endothelial cells.

Gene ID:

ANTXR1

Uniprot

Q9H6X2

Synonyms:

Anthrax toxin receptor 1 (Tumor endothelial marker 8), ANTXR1, ATR TEM8

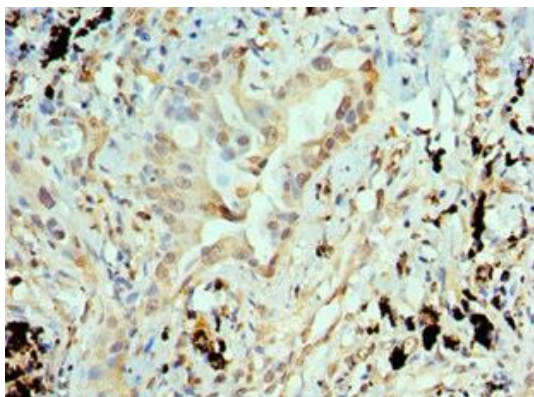
Immunogen:

Recombinant Human Anthrax toxin receptor 1 protein (315-564AA).

Storage:

PBS with 0.02% sodium azide, 50% glycerol, pH7.3.

Product Images



Immunohistochemistry of paraffin-embedded human lung cancer using PACO43037 at dilution of 1:100.