

SLURP1 Antibody



PACO43017

Product Information

Size:

50ul

Reactivity:

Human

Source:

Rabbit

Isotype:

IgG

Applications:

ELISA, IHC

Recommended dilutions:

ELISA:1:2000-1:10000, IHC:1:20-1:200

Protein Background:

Has an antitumor activity. Was found to be a marker of late differentiation of the skin. Implicated in maintaining the physiological and structural integrity of the keratinocyte layers of the skin.

Gene ID:

SLURP1

Uniprot

P55000

Synonyms:

Secreted Ly-6/uPAR-related protein 1 (SLURP-1) (ARS component B) (ARS(component B)-81/S) (Anti-neoplastic urinary protein) (ANUP), SLURP1, ARS

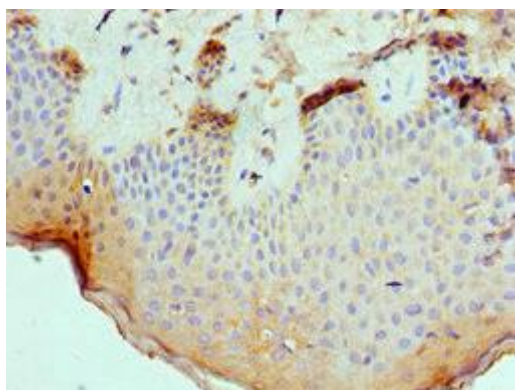
Immunogen:

Recombinant Human Secreted Ly-6/uPAR-related protein 1 protein (1-103AA).

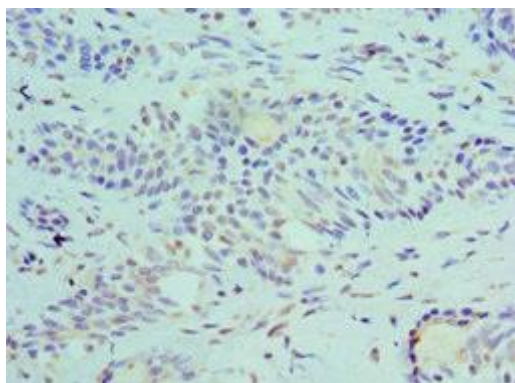
Storage:

PBS with 0.02% sodium azide, 50% glycerol, pH7.3.

Product Images



Immunohistochemistry of paraffin-embedded human skin tissue using PACO43017 at dilution of 1:100.



Immunohistochemistry of paraffin-embedded human breast cancer using PACO43017 at dilution of 1:100.