

## Product Information

**Size:**

50ul

**Reactivity:**

Human

**Source:**

Rabbit

**Isotype:**

IgG

**Applications:**

ELISA, IHC

**Recommended dilutions:**

ELISA:1:2000-1:10000, IHC:1:20-1:200

**Protein Background:**

Human saliva appears to contain several cysteine proteinase inhibitors that are immunologically related to cystatin S but that differ in their specificity due to amino acid, sequence differences. Cystatin SN, with a pI of 7.5, is a much better inhibitor of papain and dipeptidyl peptidase I than is cystatin S, although both inhibit ficin equally well.

**Gene ID:**

CST1

**Uniprot**

P01037

**Synonyms:**

Cystatin-SN (Cystain-SA-I) (Cystatin-1) (Salivary cystatin-SA-1), CST1

**Immunogen:**

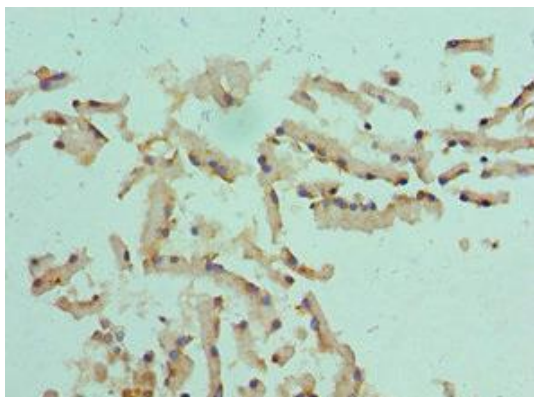
Recombinant Human Cystatin-SN protein (20-141AA).

**Storage:**

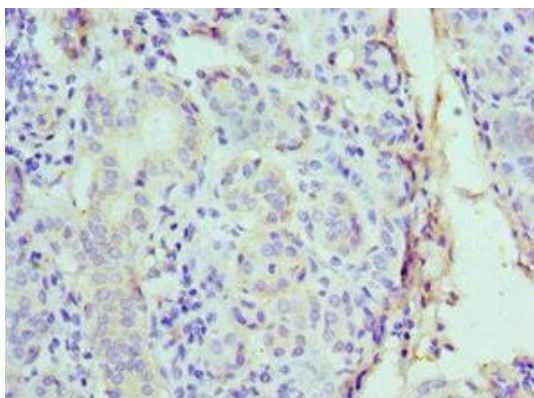
PBS with 0.02% sodium azide, 50% glycerol, pH7.3.

## Product Images

---



Immunohistochemistry of paraffin-embedded human prostate tissue using PACO43015 at dilution of 1:100.



Immunohistochemistry of paraffin-embedded human salivary gland tissue using PACO43015 at dilution of 1:100.