

Product Information

Size:

50ul

Reactivity:

Human

Source:

Rabbit

Isotype:

IgG

Applications:

ELISA, WB, IHC, IF

Recommended dilutions:

ELISA:1:2000-1:10000, WB:1:1000-1:5000,
IHC:1:20-1:200, IF:1:50-1:200

Protein Background:

One gap junction consists of a cluster of closely packed pairs of transmembrane channels, the connexons, through which materials of low MW diffuse from one cell to a neighboring cell.

Gene ID:

GJC1

Uniprot

P36383

Synonyms:

Gap junction gamma-1 protein (Connexin-45) (Cx45) (Gap junction alpha-7 protein), GJC1, GJA7

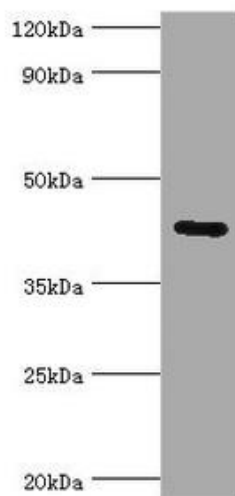
Immunogen:

Recombinant Human Gap junction gamma-1 protein (247-396AA).

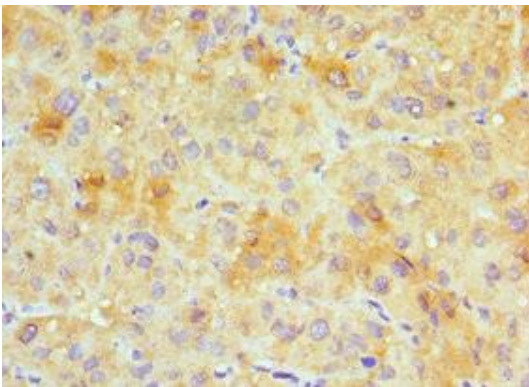
Storage:

PBS with 0.02% sodium azide, 50% glycerol, pH7.3.

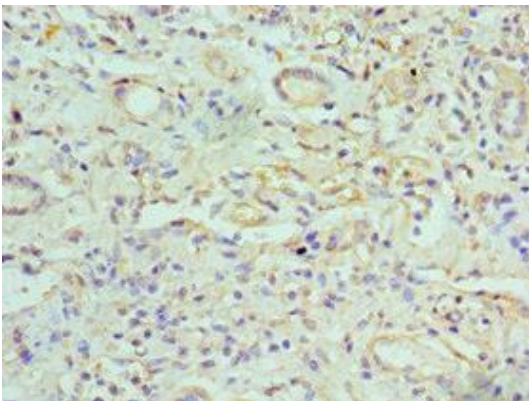
Product Images



Western blot. All lanes: Gap junction gamma-1 protein antibody at 6µg/ml + 293T whole cell lysate. Secondary. Goat polyclonal to rabbit IgG at 1/10000 dilution. Predicted band size: 45 kDa. Observed band size: 45 kDa.



Immunohistochemistry of paraffin-embedded human liver cancer using PACO43013 at dilution of 1:100.



Immunohistochemistry of paraffin-embedded human kidney tissue using PACO43013 at dilution of 1:100.