

# GLUD2 Antibody



PACO43012

---

## Product Information

**Size:**

50ul

**Reactivity:**

Human, Mouse, Rat

**Source:**

Rabbit

**Isotype:**

IgG

**Applications:**

ELISA, WB, IHC

**Recommended dilutions:**

ELISA:1:2000-1:10000, WB:1:500-1:2000,  
IHC:1:20-1:200

**Protein Background:**

Important for recycling the chief excitatory neurotransmitter, glutamate, during neurotransmission.

**Gene ID:**

GLUD2

**Uniprot**

P49448

**Synonyms:**

Glutamate dehydrogenase 2, mitochondrial (GDH 2) (EC 1.4.1.3), GLUD2, GLUDP1

**Immunogen:**

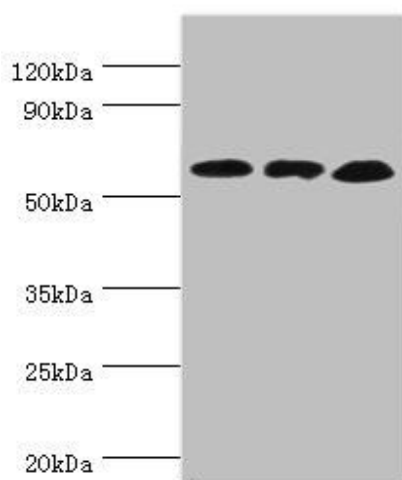
Recombinant Human Glutamate dehydrogenase 2, mitochondrial protein (319-558AA).

**Storage:**

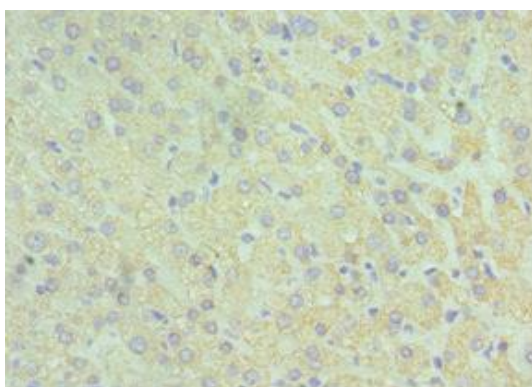
PBS with 0.02% sodium azide, 50% glycerol, pH7.3.

## Product Images

---



Western blot. All lanes: Glutamate dehydrogenase 2, mitochondrial antibody at 4 $\mu$ g/ml. Lane 1: Mouse brain tissue. Lane 2: 293T whole cell lysate. Lane 3: Rat brain tissue. Secondary. Goat polyclonal to rabbit IgG at 1/10000 dilution. Predicted band size: 61 kDa. Observed band size: 61 kDa.



Immunohistochemistry of paraffin-embedded human liver tissue using PACO43012 at dilution of 1:100.