

GLUD2 Antibody



PACO43011

Product Information

Size:

50ul

Reactivity:

Human

Source:

Rabbit

Isotype:

IgG

Applications:

ELISA, WB

Recommended dilutions:

ELISA:1:2000-1:10000, WB:1:500-1:5000

Protein Background:

Important for recycling the chief excitatory neurotransmitter, glutamate, during neurotransmission.

Gene ID:

GLUD2

Uniprot

P49448

Synonyms:

Glutamate dehydrogenase 2, mitochondrial (GDH 2) (EC 1.4.1.3), GLUD2, GLUDP1

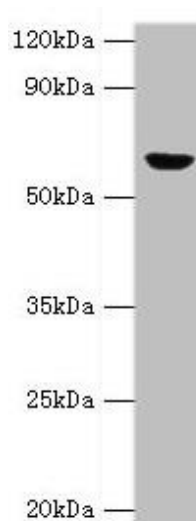
Immunogen:

Recombinant Human Glutamate dehydrogenase 2, mitochondrial protein (319-558AA).

Storage:

PBS with 0.02% sodium azide, 50% glycerol, pH7.3.

Product Images



Western blot. All lanes: GLUD2 antibody at 2 μ g/ml + 293T whole cell lysate. Secondary. Goat polyclonal to rabbit IgG at 1/10000 dilution. Predicted band size: 61 kDa. Observed band size: 61 kDa.