

# CTCF Antibody



PACO43008

---

## Product Information

**Size:**

50ul

**Reactivity:**

Human

**Source:**

Rabbit

**Isotype:**

IgG

**Applications:**

ELISA, IHC

**Recommended dilutions:**

ELISA:1:2000-1:10000, IHC:1:20-1:200

**Protein Background:**

**Gene ID:**

CTCF

**Uniprot**

P49711

**Synonyms:**

Transcriptional repressor CTCF (11-zinc finger protein) (CCCTC-binding factor) (CTCFL1 paralogs), CTCF

**Immunogen:**

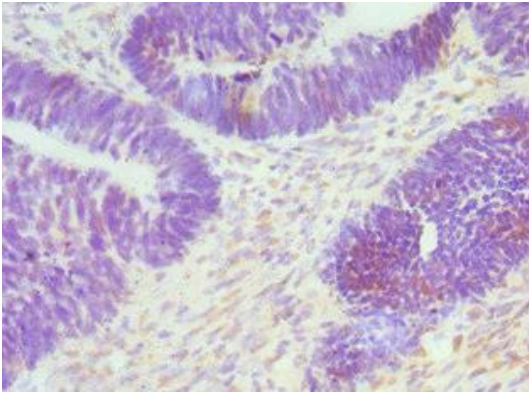
Recombinant Human Transcriptional repressor CTCF protein (1-260AA).

**Storage:**

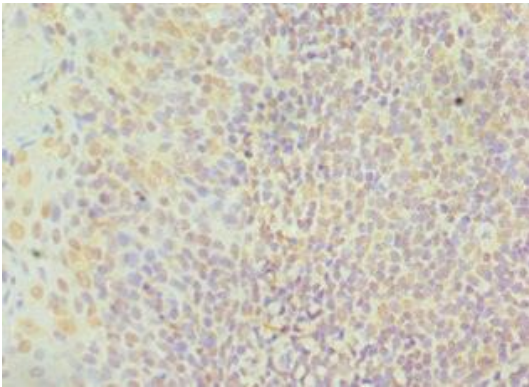
PBS with 0.02% sodium azide, 50% glycerol, pH7.3.

## Product Images

---



Immunohistochemistry of paraffin-embedded human ovarian cancer using PACO43008 at dilution of 1:100.



Immunohistochemistry of paraffin-embedded human tonsil tissue using PACO43008 at dilution of 1:100.