

# CUL1 Antibody



PACO43002

---

## Product Information

**Size:**

50ul

**Reactivity:**

Human

**Source:**

Rabbit

**Isotype:**

IgG

**Applications:**

ELISA, IHC

**Recommended dilutions:**

ELISA:1:2000-1:10000, IHC:1:20-1:200

**Protein Background:**

**Gene ID:**

CUL1

**Uniprot**

Q13616

**Synonyms:**

Cullin-1 (CUL-1), CUL1

**Immunogen:**

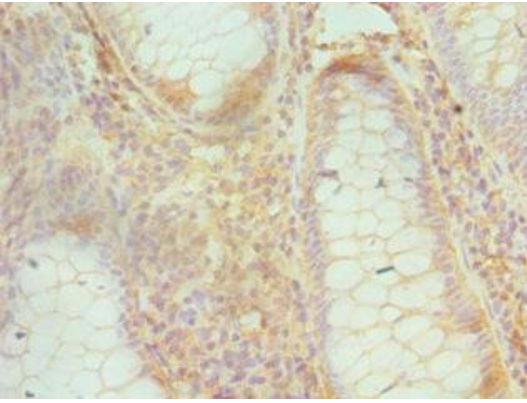
Recombinant Human Cullin-1 protein (500-776AA).

**Storage:**

PBS with 0.02% sodium azide, 50% glycerol, pH7.3.

## Product Images

---



Immunohistochemistry of paraffin-embedded human colon cancer using PACO43002 at dilution of 1:100.