

CUL1 Antibody

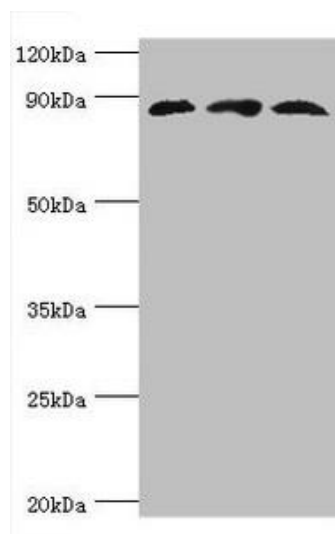


PACO43001

Product Information

Size:	Protein Background:
50ul	
Reactivity:	Gene ID:
Human	CUL1
Source:	Uniprot
Rabbit	Q13616
Isotype:	Synonyms:
IgG	Cullin-1 (CUL-1), CUL1
Applications:	Immunogen:
ELISA, WB	Recombinant Human Cullin-1 protein (500-776AA).
Recommended dilutions:	Storage:
ELISA:1:2000-1:10000, WB:1:500-1:1000	PBS with 0.02% sodium azide, 50% glycerol, pH7.3.

Product Images



Western blot. All lanes: Cullin-1 antibody at 6 μ g/ml. Lane 1: PC-3 whole cell lysate. Lane 2: K562 whole cell lysate. Lane 3: Hela whole cell lysate. Secondary. Goat polyclonal to rabbit IgG at 1/10000 dilution. Predicted band size: 90 kDa. Observed band size: 90 kDa.