

PACO42998

Product Information

Size:

50ul

Reactivity:

Human

Source:

Rabbit

Isotype:

IgG

Applications:

ELISA, IHC

Recommended dilutions:

ELISA:1:2000-1:10000, IHC:1:20-1:200

Protein Background:

Binds to type I, II, and IV collagens. This adhesion protein may play an important role in cell-collagen interactions. In cartilage, may be involved in endochondral bone formation.

Gene ID:

TGFBI

Uniprot

Q15582

Synonyms:

Transforming growth factor-beta-induced protein ig-h3 (beta ig-h3) (Kerato-epithelin) (RGD-containing collagen-associated protein) (RGD-CAP), TGFBI, BIGH3

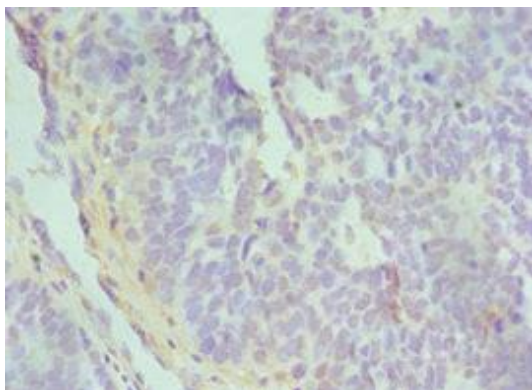
Immunogen:

Recombinant Human Transforming growth factor-beta-induced protein ig-h3 protein (30-250AA).

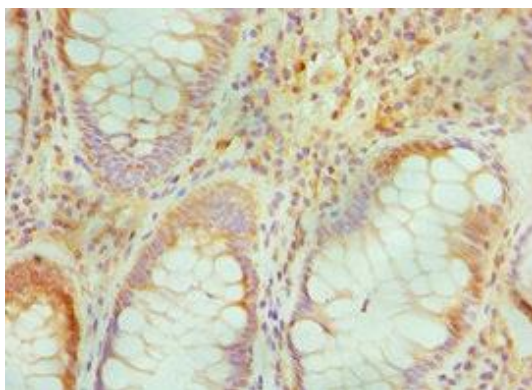
Storage:

PBS with 0.02% sodium azide, 50% glycerol, pH7.3.

Product Images



Immunohistochemistry of paraffin-embedded human endometrial cancer using PACO42998 at dilution of 1:100.



Immunohistochemistry of paraffin-embedded human colon cancer using PACO42998 at dilution of 1:100.