

## Product Information

**Size:**

50ul

**Reactivity:**

Human

**Source:**

Rabbit

**Isotype:**

IgG

**Applications:**

ELISA, IHC

**Recommended dilutions:**

ELISA:1:2000-1:10000, IHC:1:20-1:200

**Protein Background:**

The normal physiological role of BLM hydrolase is unknown, but it catalyzes the inactivation of the antitumor drug BLM (a glycopeptide) by hydrolyzing the carboxamide bond of its B-aminoalaninamide moiety thus protecting normal and malignant cells from BLM toxicity.

**Gene ID:**

BLMH

**Uniprot**

Q13867

**Synonyms:**

Bleomycin hydrolase (BH) (BLM hydrolase) (BMH) (EC 3.4.22.40), BLMH

**Immunogen:**

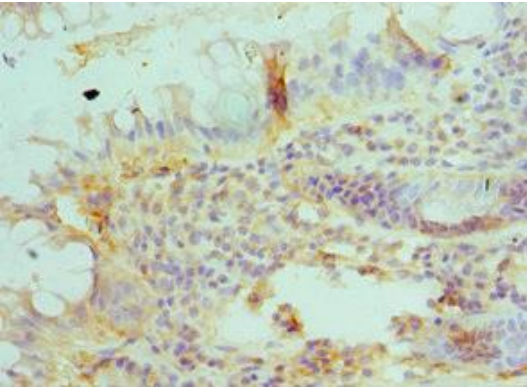
Recombinant Human Bleomycin hydrolase protein (1-300AA).

**Storage:**

PBS with 0.02% sodium azide, 50% glycerol, pH7.3.

## Product Images

---



Immunohistochemistry of paraffin-embedded human colon cancer using PACO42988 at dilution of 1:100.