

ASAH1 Antibody



PACO42986

Product Information

Size:

50ul

Reactivity:

Human, Mouse

Source:

Rabbit

Isotype:

IgG

Applications:

ELISA, WB, IHC

Recommended dilutions:

ELISA:1:2000-1:10000, WB:1:500-1:5000,
IHC:1:20-1:200

Protein Background:

Hydrolyzes the sphingolipid ceramide into sphingosine and free fatty acid, .

Gene ID:

ASAH1

Uniprot

Q13510

Synonyms:

acid, ceramidase (AC) (ACDase) (acid, CDase) (EC 3.5.1.23) (Acylsphingosine deacylase) (N-acylsphingosine amidohydrolase) (Putative 32 kDa heart protein) (PHP32) [Cleaved into: acid, ceramidase subunit alpha; acid, ceramidase subunit beta], ASAH1, ASAH

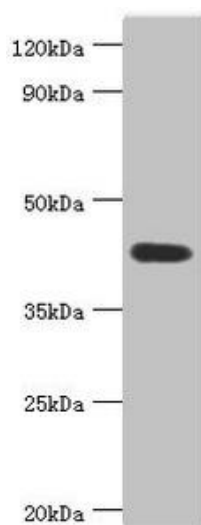
Immunogen:

Recombinant Human acid, ceramidase protein (146-395AA).

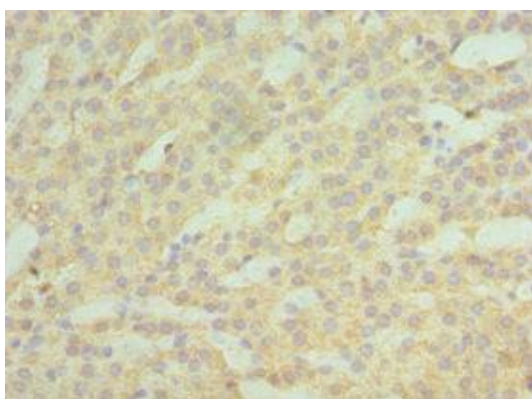
Storage:

PBS with 0.02% sodium azide, 50% glycerol, pH7.3.

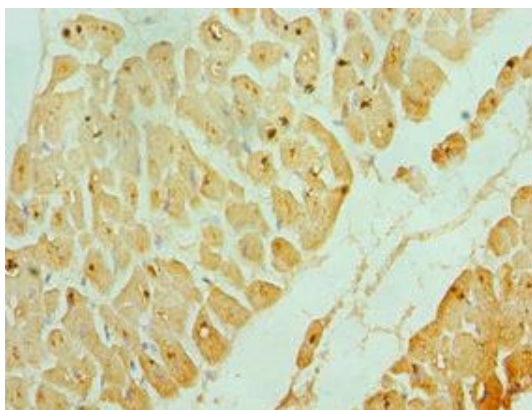
Product Images



Western blot. All lanes: Acid ceramidase antibody at 6 μ g/ml + Mouse heart tissue. Secondary. Goat polyclonal to rabbit IgG at 1/10000 dilution. Predicted band size: 45, 47 kDa. Observed band size: 45 kDa.



Immunohistochemistry of paraffin-embedded human kidney tissue using PACO42986 at dilution of 1:100.



Immunohistochemistry of paraffin-embedded human heart tissue using PACO42986 at dilution of 1:100.