

PACO42971

---

## Product Information

**Size:**

50ul

**Reactivity:**

Human, Mouse, Rat

**Source:**

Rabbit

**Isotype:**

IgG

**Applications:**

ELISA, WB, IHC

**Recommended dilutions:**

ELISA:1:2000-1:10000, WB:1:500-1:5000,  
IHC:1:20-1:200

**Protein Background:**

Ileal protein which stimulates gastric acid, and pepsinogen secretion. Seems to be able to bind to bile salts and bilirubins. Isoform 2 is essential for the survival of colon cancer cells to bile acid, induced apoptosis.

**Gene ID:**

FABP6

**Uniprot**

P51161

**Synonyms:**

Gastrotropin (GT) (Fatty acid, binding protein 6) (Ileal lipid-binding protein) (ILBP) (Intestinal 15 kDa protein) (I-15P) (Intestinal bile acid, binding protein) (I-BABP), FABP6, ILBP ILLBP

**Immunogen:**

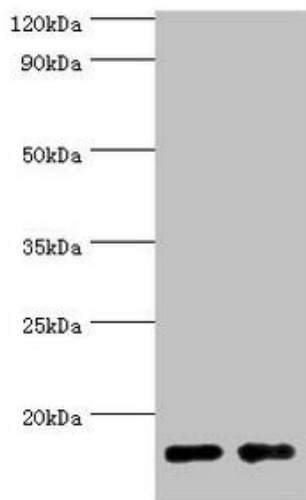
Recombinant Human Gastrotropin protein (1-128AA).

**Storage:**

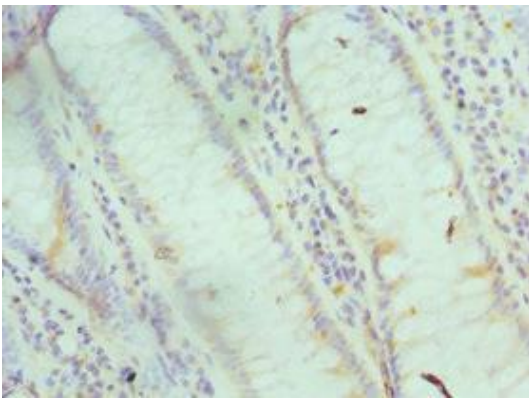
PBS with 0.02% sodium azide, 50% glycerol, pH7.3.

## Product Images

---



Western blot. All lanes: Gastrotropin antibody at 8 $\mu$ g/ml. Lane 1: Mouse small intestine tissue. Lane 2: Rat small intestine tissue. Secondary. Goat polyclonal to rabbit IgG at 1/10000 dilution. Predicted band size: 15, 20 kDa. Observed band size: 15 kDa.



Immunohistochemistry of paraffin-embedded human colon cancer using PACO42971 at dilution of 1:100.