

Product Information

Size:

50ul

Reactivity:

Human

Source:

Rabbit

Isotype:

IgG

Applications:

ELISA, WB, IHC, IF

Recommended dilutions:

ELISA:1:2000-1:10000, WB:1:500-1:5000,
IHC:1:20-1:200, IF:1:20-1:200

Protein Background:

Required to prevent excessive muscle loss upon denervation. This function requires SMAD4 and is mediated by phosphorylated SMAD1/5/8. Could be involved in bone and cartilage formation. Chondrogenic signaling is mediated by the high-affinity receptor BMPR1B. Binds bacterial lipopolysaccharide (LPS) et mediates LPS-induced inflammatory response, including TNF secretion by monocytes.

Gene ID:

GDF5

Uniprot

P43026

Synonyms:

Growth/differentiation factor 5 (GDF-5) (Bone morphogenetic protein 14) (BMP-14) (Cartilage-derived morphogenetic protein 1) (CDMP-1) (Lipopolysaccharide-associated protein 4) (LAP-4) (LPS-associated protein 4) (Radotermin), GDF5, BMP14 CDMP1

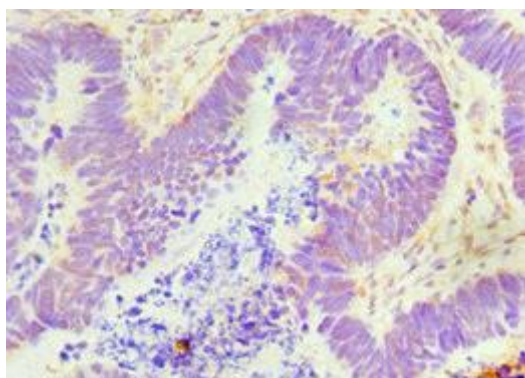
Immunogen:

Recombinant Human Growth/differentiation factor 5 protein (202-501AA).

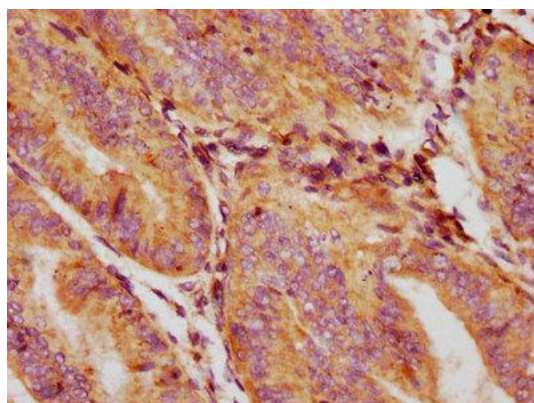
Storage:

PBS with 0.02% sodium azide, 50% glycerol, pH7.3.

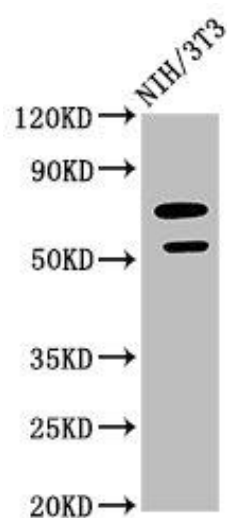
Product Images



Immunohistochemistry of paraffin-embedded human ovarian cancer using PACO42950 at dilution of 1:100.



IHC image of PACO42950 diluted at 1:132 and staining in paraffin-embedded human endometrial cancer performed on a Leica Bond™ system. After dewaxing and hydration, antigen retrieval was mediated by high pressure in a citrate buffer (pH 6.0). Section was blocked with 10% normal goat serum 30min at RT. Then primary antibody (1% BSA) was incubated at 4°C overnight. The primary is detected by a biotinylated secondary antibody and visualized using an HRP conjugated SP system.



Western Blot. Positive WB detected in: NIH/3T3 whole cell lysate. All lanes: GDF5 antibody at 2.64µg/ml. Secondary. Goat polyclonal to rabbit IgG at 1/50000 dilution. Predicted band size: 56 kDa. Observed band size: 56 kDa.