

ATP7B Antibody



PACO42947

Product Information

Size:

50ul

Reactivity:

Human

Source:

Rabbit

Isotype:

IgG

Applications:

ELISA, IHC

Recommended dilutions:

ELISA:1:2000-1:10000, IHC:1:20-1:200

Protein Background:

Involved in the export of copper out of the cells, such as the efflux of hepatic copper into the bile.

Gene ID:

ATP7B

Uniprot

P35670

Synonyms:

Copper-transporting ATPase 2 (EC 3.6.3.54) (Copper pump 2) (Wilson disease-associated protein) [Cleaved into: WND/140 kDa], ATP7B, PWD WC1 WND

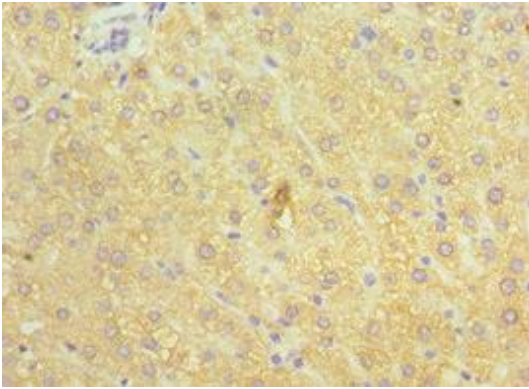
Immunogen:

Recombinant Human Copper-transporting ATPase 2 protein (1166-1465AA).

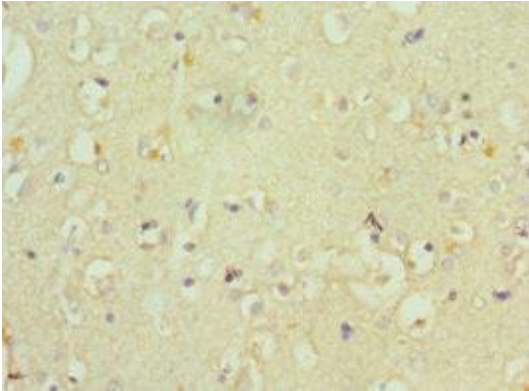
Storage:

PBS with 0.02% sodium azide, 50% glycerol, pH7.3.

Product Images



Immunohistochemistry of paraffin-embedded human liver tissue using PACO42947 at dilution of 1:100.



Immunohistochemistry of paraffin-embedded human brain tissue using PACO42947 at dilution of 1:100.