

# RAB4A Antibody



PACO42940

---

## Product Information

**Size:**

50ul

**Reactivity:**

Human, Mouse

**Source:**

Rabbit

**Isotype:**

IgG

**Applications:**

ELISA, WB, IHC

**Recommended dilutions:**

ELISA:1:2000-1:10000, WB:1:500-1:2000,  
IHC:1:20-1:200

**Protein Background:**

Protein transport. Probably involved in vesicular traffic.

**Gene ID:**

RAB4A

**Uniprot**

P20338

**Synonyms:**

Ras-related protein Rab-4A, RAB4A, RAB4

**Immunogen:**

Recombinant Human Ras-related protein Rab-4A protein (1-218AA).

**Storage:**

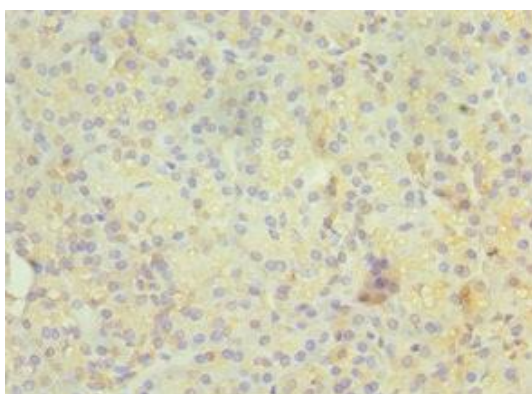
PBS with 0.02% sodium azide, 50% glycerol, pH7.3.

## Product Images

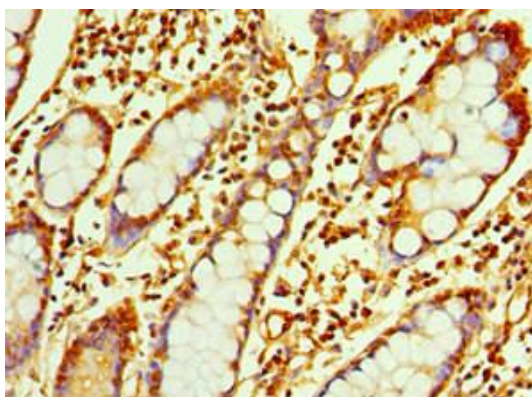
---



Western blot. All lanes: Ras-related protein Rab-4A antibody at 2 $\mu$ g/ml + Mouse brain tissue. Secondary. Goat polyclonal to rabbit IgG at 1/10000 dilution. Predicted band size: 24 kDa. Observed band size: 24 kDa.



Immunohistochemistry of paraffin-embedded human pancreatic tissue using PACO42940 at dilution of 1:100.



Immunohistochemistry of paraffin-embedded human small intestine tissue using PACO42940 at dilution of 1:100.