

RAB4A Antibody



PACO42939

Product Information

Size:

50ul

Reactivity:

Human

Source:

Rabbit

Isotype:

IgG

Applications:

ELISA, IHC

Recommended dilutions:

ELISA:1:2000-1:10000, IHC:1:20-1:200

Protein Background:

Protein transport. Probably involved in vesicular traffic.

Gene ID:

RAB4A

Uniprot

P20338

Synonyms:

Ras-related protein Rab-4A, RAB4A, RAB4

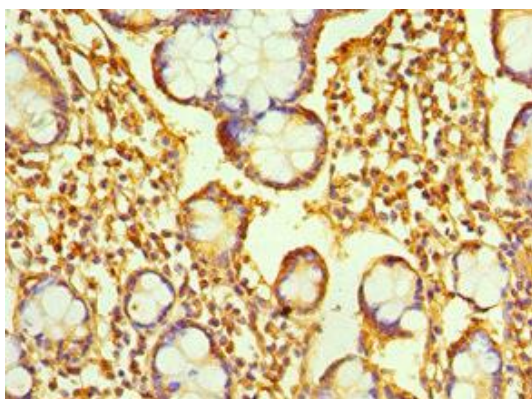
Immunogen:

Recombinant Human Ras-related protein Rab-4A protein (1-218AA).

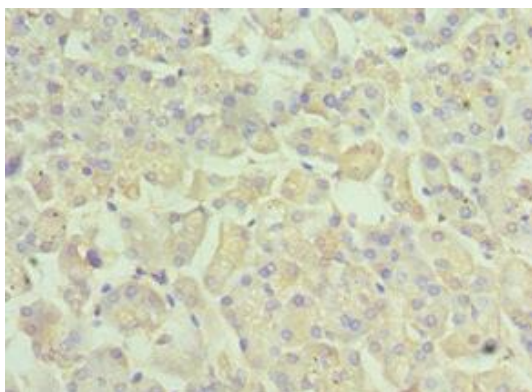
Storage:

PBS with 0.02% sodium azide, 50% glycerol, pH7.3.

Product Images



Immunohistochemistry of paraffin-embedded human small intestine tissue using PACO42939 at dilution of 1:100.



Immunohistochemistry of paraffin-embedded human pancreatic tissue using PACO42939 at dilution of 1:100.