

PACO42934

Product Information

Size:

50ul

Reactivity:

Human, Rat

Source:

Rabbit

Isotype:

IgG

Applications:

ELISA, WB, IHC

Recommended dilutions:

ELISA:1:2000-1:10000, WB:1:500-1:2000,
IHC:1:20-1:200

Protein Background:

Adapter protein which associates with tyrosine-phosphorylated growth factor receptors, such as KDR and PDGFRB, or their cellular substrates. Maintains low levels of EIF2S1 phosphorylation by promoting its dephosphorylation by PP1. Plays a role in the DNA damage response, not in the detection of the damage by ATM/ATR, but for efficient activation of downstream effectors, such as that of CHEK2. Plays a role in ELK1-dependent transcriptional activation in response to activated Ras signaling. Modulates the activation of EIF2AK2/PKR by dsRNA. May play a role in cell adhesion and migration through interaction with ephrin receptors.

Gene ID:

NCK1

Uniprot

P16333

Synonyms:

Cytoplasmic protein NCK1 (NCK adaptor protein 1) (Nck-1) (SH2/SH3 adaptor protein NCK-alpha), NCK1, NCK

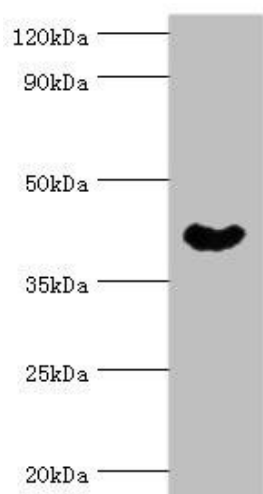
Immunogen:

Recombinant Human Cytoplasmic protein NCK1 protein (58-377AA).

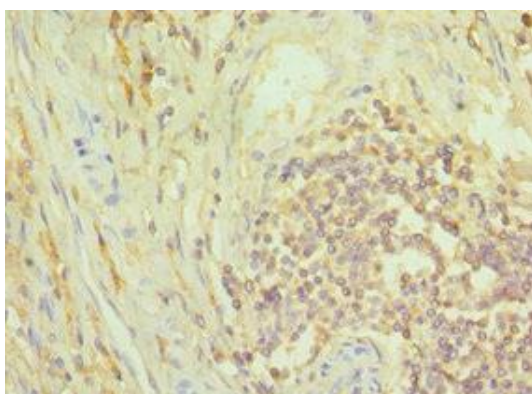
Storage:

PBS with 0.02% sodium azide, 50% glycerol, pH7.3.

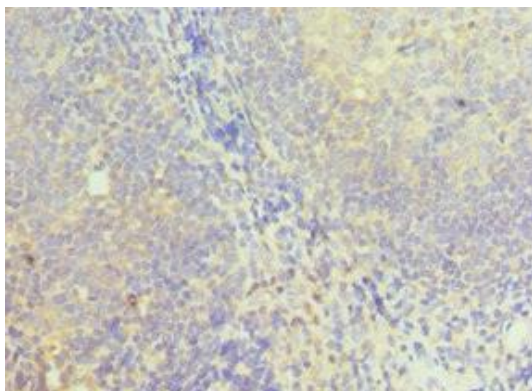
Product Images



Western blot. All lanes: Cytoplasmic protein NCK1 antibody at 4 μ g/ml + Rat liver tissue. Secondary. Goat polyclonal to rabbit IgG at 1/10000 dilution. Predicted band size: 43, 36 kDa. Observed band size: 43 kDa.



Immunohistochemistry of paraffin-embedded human colon cancer using PACO42934 at dilution of 1:100.



Immunohistochemistry of paraffin-embedded human tonsil tissue using PACO42934 at dilution of 1:100.