

PACO42911

---

## Product Information

**Size:**

50ul

**Reactivity:**

Human, Mouse

**Source:**

Rabbit

**Isotype:**

IgG

**Applications:**

ELISA, WB, IHC

**Recommended dilutions:**

ELISA:1:2000-1:10000, WB:1:500-1:5000,  
IHC:1:20-1:200

**Protein Background:**

Functions as a renin and prorenin cellular receptor. May mediate renin-dependent cellular responses by activating ERK1 and ERK2. By increasing the catalytic efficiency of renin in AGT/angiotensinogen conversion to angiotensin I, it may also play a role in the renin-angiotensin system (RAS).1 Publication.

**Gene ID:**

ATP6AP2

**Uniprot**

O75787

**Synonyms:**

Renin receptor (ATPase H(+)-transporting lysosomal accessory protein 2) (ATPase H(+)-transporting lysosomal-interacting protein 2) (ER-localized type I transmembrane adaptor) (Embryonic liver differentiation factor 10) (N14F) (Renin/prorenin receptor) (Vacuolar ATP synthase membrane sector-associated protein M8-9) (ATP6M8-9) (V-ATPase M8.9 subunit), ATP6AP2, ATP6IP2 CAPER ELDF10

**Immunogen:**

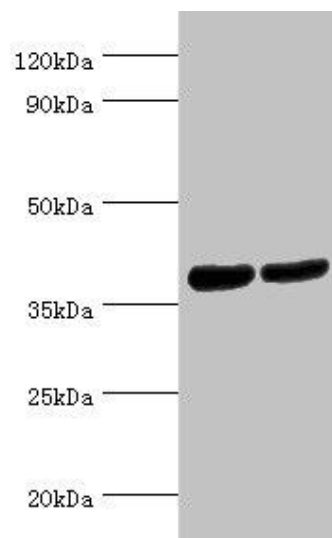
Recombinant Human Renin receptor protein (251-350AA).

**Storage:**

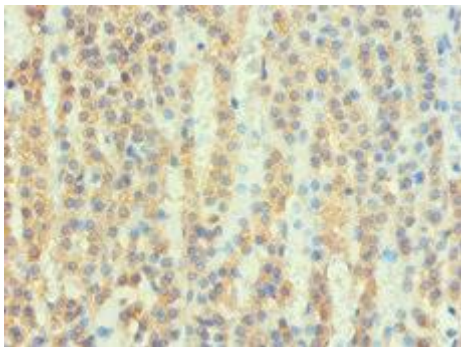
PBS with 0.02% sodium azide, 50% glycerol, pH7.3.

## Product Images

---



Western blot. All lanes: Renin receptor antibody at 2 $\mu$ g/ml. Lane 1: HeLa whole cell lysate. Lane 2: Mouse heart tissue. Secondary: Goat polyclonal to rabbit IgG at 1/10000 dilution. Predicted band size: 40, 36 kDa. Observed band size: 40 kDa.



Immunohistochemistry of paraffin-embedded human adrenal gland tissue using PACO42911 at dilution of 1:100.