

Product Information

Size:

50ul

Reactivity:

Human, Mouse

Source:

Rabbit

Isotype:

IgG

Applications:

ELISA, WB, IHC

Recommended dilutions:

ELISA:1:2000-1:10000, WB:1:500-1:2000,
IHC:1:20-1:200

Protein Background:

Plays an important role in the differentiation and development of pancreatic islet beta cells. Transcriptional repressor that binds to a common element in the glucagon, insulin and somatostatin promoters. Competes with PAX6 for this same promoter binding site. Isoform 2 appears to be a dominant negative form antagonizing PAX4 transcriptional activity.

Gene ID:

PAX4

Uniprot

O43316

Synonyms:

Paired box protein Pax-4, PAX4

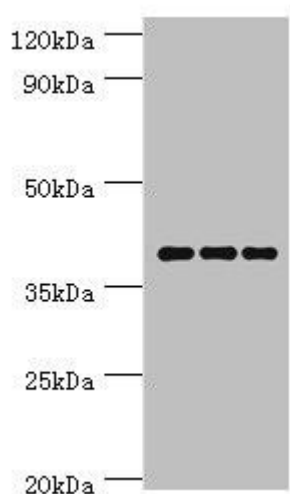
Immunogen:

Recombinant Human Paired box protein Pax-4 protein (50-200AA).

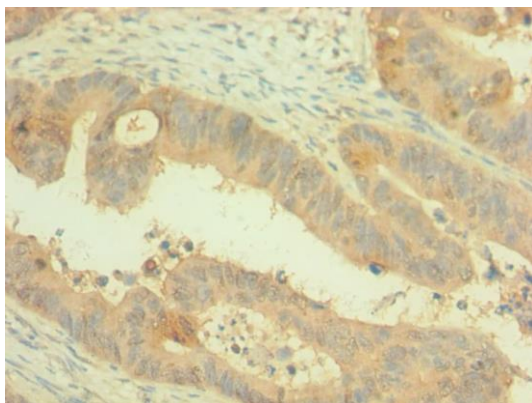
Storage:

PBS with 0.02% sodium azide, 50% glycerol, pH7.3.

Product Images



Western blot. All lanes: Paired box protein Pax-4 antibody at 6 μ g/ml. Lane 1: Hela whole cell lysate. Lane 2: K562 whole cell lysate. Lane 3: Mouse pancreatic. Secondary: Goat polyclonal to rabbit IgG at 1/10000 dilution. Predicted band size: 38, 30 kDa. Observed band size: 38 kDa.



Immunohistochemistry of paraffin-embedded human colon cancer using PACO42905 at dilution of 1:100.